

124th

Stearns County Fair



July 29 - August 2, 2026

www.stearnscountyfair.com

STAR
Publications

98.1
MINNESOTA'S NEW COUNTRY



Free

GATE



Celebrate
America 250
at the fair!



Featuring Crescent
City Amusements

Stearns County Fairgrounds | Sauk Centre, MN



we care about your
community. because it's
our community too.
simple human sense.



ADVANTAGE 1
INSURANCE AGENCY

Auto-Owners
INSURANCE
LIFE • HOME • CAR • BUSINESS

320-252-6650 | advantageoneins.com

MELROSE

6 3rd Ave NE
Melrose, MN 56352

ST. CLOUD

3801 North 3rd Street
St. Cloud, MN 56303

ALBANY

140 5th Street,
Albany, MN 56307

HOLDINGFORD

101 Plymouth St.,
Holdingford, MN 56340

PIERZ

227 Main St N
Pierz, MN 56364

LONG PRAIRIE

9 Central Ave
Long Prairie, MN 56347

SAUK CENTRE

864 Main Street
Sauk Centre, MN 56378



- *New/Used Tracks*
- *Planter Tracks*
- *Engine Tuners*
- *Track Repair*
- *Wheels*



Bryan 320-533-0190



WWW.FARMRITEEQUIP.COM

LONG PRAIRIE

CALL DEAN TODAY AT

866-514-0982

19612 US-71, Long Prairie, MN 56347

ST. CLOUD

CALL JAY TODAY AT

844-262-2281

810 Mayhew Lake Rd NE, St. Cloud, MN 56304



Bobcat

Cash rebates up to
\$10,000*

As low as **0%**
for 60 months*

**Even more savings
now through June
30th, 2026**

Leasing available for as
low as \$800* per month
on select models

*Offer ends 6/30/2026. Available at participating
and eligible dealers only. Offers may vary by
product type, series, model, and select units in a
dealer's current inventory. Customer must take
delivery from dealer stock by 6/30/2026. .



CALL TODAY FOR DETAILS!

Work with someone **LOCAL!**

- Cooling
- Heating
- Plumbing
- Indoor Air Quality

Serving Central MN

We are a *family*,
not a franchise.



"We're Family, Not A Franchise"

Freeport Area | Richmond
www.kraemerheating.com

320-597-7272



LOCAL

Saluting

Dairy Farmers

The Bongards Cooperative is made up of hundreds of family-owned farms – many run by farmers carrying on a legacy that reaches back multiple generations. These farms supply the milk used to craft Bongards' distinctive brand of cheese using old-world craftsmanship paired with cutting-edge technology. The result is cheese that delivers unforgettable taste and unparalleled quality. Learn more about our co-op, products, and current job openings at www.bongards.com.



Visit our Retail Stores

13200 Co Rd 51
Bongards, MN
(952) 466-3545



101 2nd Ave SE #100
Perham, MN
(218) 347-4142



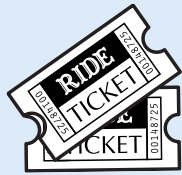
Crescent City Amusements

WRISTBAND PRICES:

All rides excluding "Rock It"
 \$25.00 in advance
 \$30.00 during the fair

WRISTBANDS good for one of the following days:

- Wednesday: 5-10 p.m.
- Friday: Noon-5 p.m.
- Saturday: Noon-5 p.m.



INDIVIDUAL TICKETS

\$1.00 each - available during the fair only

MEGA PASS

\$70.00 in advance

GOOD FOR UNLIMITED RIDES DURING THE ENTIRE FAIR!

ADVANCE WRISTBAND & MEGA PASS SALES AVAILABLE AT STEARNSCOUNTYFAIR.COM

Grandstand Info

DEMOLITION DERBY - Thurs. – Sat.
 AUTO CROSS - Sunday

\$12.00 all ages

DON'T MISS THE FUN!



COMMUNITY SPECIAL FOR SUNDAY "Souper Sunday" \$40.00 (from 2-5 p.m.)

3 Cans of Soup - 3 Wristbands - 3 Hours • ALL SOUP DONATIONS GO TO THE LOCAL FOOD SHELF

Stearns County Fair - Sauk Centre

2026 FAIR DAYS SCHEDULE

Be sure to check out our website at stearnscountyfair.com and on Facebook for any changes to this schedule.

Saturday, July 25

6 p.m. Pickup & Tractor Pulling Contest - Grandstand
(Sponsored by The Stearns County Plowman and Sauk Centre FFA Alumni)

Tuesday, July 28

4 p.m. 4-H Pet Show - 4-H Building

Wednesday, July 29

Entry Day

8 a.m.-7 p.m. Open Class, 4-H and FFA livestock stalling
(Use south gate only — check in Wednesday only)

9 a.m. Open Class Dairy Show & District Holstein Show - Indoor Show Arena

10 a.m. All exhibit buildings open for setup

10 a.m. Gardening for Fun
(Sponsored by Stearns County Master Gardeners)

11 a.m. Opening Ceremony - the flagpole

12 p.m. 4-H Building opens

12-9 p.m. Adventures in Agriculture
Agriculture Building

1-4 p.m. Sandy Weisser Music - Herald Bandshell

3 p.m. Open class (non-livestock) check in - 4-H Building

3 p.m. Senior citizen class check in
4-H Building

4 p.m. Bingo Open
(Sponsored by the Knights of Columbus)

5 p.m. Midway carnival rides open
(wristband 5-10 p.m.)

5 p.m. Rabbit Show (4-H, FFA then open class)
Indoor Show Arena

5:30 p.m. Ranch Rodeo - Outdoor Arena
(Sign up closes at 5 p.m.)

7-10 p.m. IV PLAY - Grandstand

7 p.m. ALL 4-H LIVESTOCK MUST BE IN PLACE

9 p.m. Exhibit buildings close

Thursday, July 30

Senior Citizens Day

8 a.m. 4-H Building open for open class entries

8 a.m. 4-H Poultry Show - Indoor Show Arena

8 a.m. Open Class entry - 4-H Building
(Pre-registration required, all open class entries to be in place by 11 a.m.)

9 a.m. Medallion Hunt - Clue released

10 a.m. - 9 p.m. Adventures in Agriculture
Agriculture Building

10 a.m. Open Class Horse Judging - Outdoor Arena

10 a.m. All Exhibit Buildings Open

10 a.m. Interactive STEAM projects for kids
Agriculture Building

11 a.m. Medallion Hunt - Clue released

12 p.m. Bingo Open
(Sponsored by the Knights of Columbus)

12-3 p.m. Gig Noonan - Herald Bandshell

12-3 p.m. Donny Brang - Heritage Stage

12:30 p.m. Storybook reading with Stearns County Dairy Princess - Agriculture Building

1 p.m. Senior Citizens Recognition Program - Heritage Stage

1 p.m. Open Class Judging Begins (non-livestock)
4-H Building

1 p.m. Medallion Hunt - Clue released

2 p.m. Interactive STEAM projects for kids
Agriculture Building

2 p.m. 4-H Sheep Show - Indoor Show Arena

3 p.m. Midway carnival rides open

3 p.m. Medallion Hunt - Clue released

12:30 p.m. Storybook reading with Stearns County Dairy Princess - Agriculture Building

5 p.m. Hot Dog Eating Contest - Heritage Stage

5 p.m. 4-H Meat Goat Show - Indoor Show Arena

7-11 p.m. DJ Pete - Herald Bandshell

7:30 p.m. Demolition Derby - Grandstand
(Sponsored by Community Connection of Sauk Centre)

8 p.m. 4-H Dairy Goat Show - Indoor Show Arena

9 p.m. Exhibit buildings close

BINGO: East of Red Conservation Building.
Wednesday: 4-10 p.m.

Thursday-Saturday: Noon-10 p.m. | Sunday: 11 a.m.-Closing



The Stearns County 4-H Fair Schedule and more information about 4-H can be found on page 59.

Stearns County Fair - Sauk Centre

2026 FAIR DAYS SCHEDULE

Be sure to check out our website at stearnscountyfair.com and on Facebook for any changes to this schedule.

Friday, July 31

Children's Day

- 9 a.m. 4-H Dairy Show - Indoor Show Arena
- 9 a.m. Medallion Hunt - Clue released
- 10 a.m. - 9 p.m. Adventures in Ag - Ag Building
- 9 a.m. Open Class Horse Judging - Outdoor Arena
- 10 a.m. Exhibit buildings open
- 10 a.m. 4-H Horse Show - Outdoor Arena
- 10 a.m. Gardening for Fun
(Sponsored by the Stearns County Master Gardeners)
- 10 a.m. Interactive STEAM projects for kids
Agriculture Building
- 10 a.m.-12 p.m. Daycare Day Project Judging - 4-H Building
- 11 a.m. Medallion Hunt - Clue released
- 12 p.m. Midway carnival rides open
(wristbands 12-5 p.m.)
- 12:30 p.m. Adventures in rural safety
Agriculture Building
- 1 p.m. Medallion Hunt - Clue released
- 1-2:30 p.m. Tricia & The Toonies - Heritage Stage
- 10 a.m. Interactive STEAM projects for kids
Agriculture Building
- 3 p.m. Beef Show (4-H and open class)
Indoor Show Arena
- 3 p.m. Performing Arts Showcase - 4-H Building
- 3-6 p.m. Donny Brang - Herald Bandshell
- 3 p.m. Medallion Hunt - Clue released
- 3-4:30 p.m. Tricia & The Toonies - Heritage Stage
- 3:30 p.m. Adventures in rural safety
Agriculture Building
- 4 p.m. 4-H Livestock Demonstrations
(See 4-H information booth for locations)
- 5 p.m. 4-H Meat Goat Show - Indoor Show Arena
- 5-6:30 p.m. Tricia & The Toonies - Heritage Stage
- 7 p.m. 4-H Swine Show - Indoor Show Arena
- 7:30 p.m. Demolition Derby - Grandstand
- 8 p.m.-12 a.m. If Nothing Else - Herald Bandshell
- 9 p.m. Exhibit buildings close

Saturday, August 1

Family Fun Day

- 8-10 a.m. Passport to Adventures in Agriculture
Agriculture Building
- 8:30 a.m. 2nd Annual Milk 5K Run
- Agriculture Building
- 9 a.m. 4-H Horse Grand Entry - Outdoor Arena
- 9 a.m. Medallion Hunt - Clue released
- 9 a.m. Photo opportunity with a baby calf
Agriculture Building
- 10 a.m. - 9 p.m. Adventures in Agriculture
Agriculture Building
- 10 a.m. Exhibit buildings open
- 10 a.m. Honors Quilt Presentations
by Gratitude Quilters - 4-H Stage
- 10 a.m. Gardening For Fun
(Sponsored by Stearns County Master Gardeners)
- 10 a.m. Interactive STEAM projects for kids
Agriculture Building
- 10 a.m. 4-H Horse Show - Outdoor Arena
- 10:30 a.m. 4-H Livestock Auction - Indoor Show Arena
- 11 a.m. Medallion Hunt - Clue released
- 12 p.m. Bingo Open
(Sponsored by the Knights of Columbus)
- 12 p.m. Midway carnival rides open
(wristbands 12-5 p.m.)
- 1-2 p.m. Pam & Sherwin Linton
and "The Cotton Kings" - Herald Bandshell
- 1 p.m. Medallion Hunt - Clue released
- 1:30 p.m. 4-H Rocket Launch - Grandstand
- 2 p.m. Interactive STEAM projects for kids
Agriculture Building
- 2:30-3:30 p.m. Pam & Sherwin Linton
and "The Cotton Kings" - Herald Bandshell
- 3 p.m. 4-H Public Fashion Revue Staging
- 4-H Stage
- 3 p.m. Medallion Hunt - Clue released
- 3:30 p.m. 4-H Public Fashion Revue - 4-H Stage

Continued on next page



**NEW
THIS
YEAR**

Commercial Building (blue) will now be the former **Haunted House Building** by the Midway.

Agriculture Building will now be where the **Commercial Building** (blue) was.

Stearns County Fair - Sauk Centre

2026 FAIR DAYS SCHEDULE

Be sure to check out our website at stearnscountyfair.com and on Facebook for any changes to this schedule.

Saturday, August 1

Family Fun Day

- 3:30 p.m. Agriculture storybook reading
Agriculture Building
- 4-5 p.m. Pam & Sherwin Linton
and "The Cotton Kings" - *Herald Bandshell*
- 4-7 p.m. Donny Brang - *Heritage Stage*
- 5 p.m. 4-H Llama-Alpaca Showcase
Indoor Show Arena
- 5 p.m. Hot Wing Eating Contest - *Herald Bandshell*
- 6:30 p.m. Antique Tractor Parade - *Grandstand*
(Sponsored by Stearns County 2-Cylinder Club)
- 7 p.m. 4-H Premier Showmanship Contest
- Indoor Show Arena
- 7:30 p.m. Demolition Derby - *Grandstand*
(Sponsored by Community Connection of Sauk Centre)
- 8 p.m.-12 a.m. Dos Coronas - *Herald Bandshell*
- 9 p.m. Exhibit buildings close

Sunday, August 2

Fun For All

- 10 a.m. - 6 p.m. Adventures in Agriculture
- Agriculture Building
- 10 a.m. Catholic Mass - *4-H Stage*
All Faiths Welcome! **Bring a camp chair**
- 11 a.m. Exhibit buildings open
- 11 a.m. Bingo Open
(Sponsored by the Knights of Columbus)
- 11:30 a.m. Rabbit Agility Show - *Indoor Show Arena*
- 12 p.m. Midway carnival rides open *(Souper Sunday, \$40 and 3 can soup for 3 wristbands 2-5 p.m.)*
- 12 p.m. 2026 Stearns County Century and Sesquicentennial Farm Recognition and Farm Family of the Year Ceremony
- Heritage Stage
(Sponsored by the Stearns County Farm Bureau)
- 12-4 p.m. Wool Weaving Demonstrations
Agriculture Building
- 12:30 p.m. 4-H Horse Awards Ceremony - *4-H Stage*
- 1 p.m. Are you Smarter than a 4-Her
- Heritage Stage
(Sponsored by the Stearns County Farm Bureau)
- 1 p.m. Children's Pedal Pull
Next to Children's Play Area
- 1 p.m. Auto Cross - *Grandstand*
- 1 p.m. White Leg Farmers Tan Contest
Herald Bandshell
- 2 p.m. Rooster Crowing Contest - *Heritage Stage*
- 2 p.m. Interactive STEAM projects for kids
Agriculture Building
- 4 p.m. Dairy released
- 5 p.m. Other livestock and non-livestock exhibits released
- 6 p.m. **FAIR CLOSES**



SEE YOU AT THE **Fair!**

Welcome to all from the Stearns County Fair Association

Fair Time Phone Number: 320-352-2482

OFFICERS

PRESIDENT

Tom Schmitz, Albany..... 320-557-8832

VICE PRESIDENT

Steve Frericks, Albany..... 320-249-7049

SECRETARY/FAIR MANAGER

Jackie Spoden-Bolz, Sauk Centre..... 320-248-5511

TREASURER

Jodie Deschene, Sauk Centre..... 320-352-5535

BOARD OF DIRECTORS

Evelyn Budde, Grey Eagle

Larry Bromenshenkel, Sauk Centre

Tom Peterson, Sauk Centre

Tony Reuter, Freeport

Jennie Schmidke, Melrose

Dorothy Bromenschenkel, Sauk Centre

Mike Schaab, Melrose

Ryan Sand, Freeport

Katelyn Arceneau,

Leczi Fleischhaker, Albany

Tammy Frericks, Albany

Vern Frericks, Melrose

STEARNS COUNTY BOARD OF COMMISSIONERS

First District

Tarryl Clark, St. Cloud..... 320-224-4944

Second District

Joe Perske, Sartell..... 320-223-4702

Third District

Jeff Bertram, Paynesville..... 320-250-6999

Fourth District

Bob Johnson..... 320-448-8943

Fifth District

Steve Notch, Freeport..... 320-248-3605

DEPARTMENT OF SUPERINTENDENTS

Conservation

Marty Sunderman, Sauk Centre..... 320-250-6648

Open Class Entry Department

Joyce Schoen, Sauk Centre..... 320-352-6122

FFA

Duane Lichy, Albany..... 320-249-5266

Horticulture & Flowers

Evelyn Budde, Grey Eagle..... 320-248-5902

Home Activities

Joyce Schoen, Sauk Centre..... 320-352-6122

Dairy Cattle

Tom Peterson, Sauk Centre..... 320-333-2207

Beef Cattle/Swine/Sheep & Goats

Ryan Sand, Freeport..... 320-293-2724

Draft/Saddle Horses

Leczi Fleischhaker, Albany..... 320-293-2936

Poultry

Thomas Schmitz, Albany..... 320-845-6037

Rabbits

Karyn Warnert, St. Joseph..... 320-761-0170

Senior Citizens

Alice Peters, Sauk Centre..... 320-249-8521

Schools

Lisa Otte, Sauk Centre..... 320-352-6535

4-H Exhibits

Stearns County Extension Office..... 1-800-450-6171
or 320-255-6169

Show Arena

Steve Frericks, Albany..... 320-249-7049

Grandstand

Jennie Schmidke, Melrose..... 320-267-8682

MIDWAY, COMMERCIAL BOOTHS & CONCESSIONS

Jackie Spoden-Bolz, Sauk Centre..... 320-248-5511

E-mail: jackiesb@mainstreetcom.com



5-Day Parking Passes: \$15.00

Daily Pass \$5.00

Livestock Trailer Pass \$10.00

Purchase at the gate or at the Fair Office

ATTENTION FAIR CAMPERS!

Campsites are available in advance only.

They are on a first-come, first-serve basis with one camper per site. Non-electric sites may be available at fair time.

Next to indoor arena, next to or under trees, or along fence: \$175 | Self generator sites: \$100 | Electric at all sites except for tents: \$50

YOU NEED TO CALL FOR RESERVATIONS!

Tammy Frericks – 320-249-7180

TABLE OF CONTENTS	
	Page
Crescent City Amusements.....	5
2024 Fair Schedule.....	6-8
Stearns County Fair Association.....	9
Demolition Derby.....	18
Things To Do.....	19
Entertainment.....	20 and 56-57
Forage Analysis Entry Form.....	22-23
General Rules & Regulations (Open Class).....	26-27, 30-31
Daycare Day.....	55
4-H.....	59
Open Class Livestock Entry Form.....	60
Open Class Entry Form (Non-Livestock Only).....	61
Ranch Rodeo.....	62
OPEN CLASS	
Horses.....	32
Beef Cattle.....	32-33
Dairy Cattle.....	33
Goats.....	33
Rabbits.....	34
Sheep.....	34
Poultry.....	35
Horticulture.....	36-37
Plants & Flowers.....	37-38
Home Activities.....	39, 42
Baking.....	42-43
Crafts.....	44-45
Needlecraft.....	45-46, 48-49
Art.....	49-50
Senior Citizens.....	50-51
FFA.....	58

A Step Above The Rest

HEWITT HIGH-PERFORMANCE STAIRCASES

**ALL-TERRAIN STAIRCASE SYSTEM
WITH WHITE ALUMINUM DECKING**



OVER 40 YEARS OF QUALITY
AND INNOVATION IN
MANUFACTURED STAIRWAYS

Hewitt products are built like no other, using stronger materials and smarter design features to give you greater value.

- Marine
- Commercial
- Residential
- ADA Compliance
- Industrial

Many decking options and colors available.



Visit Your Hewitt dealer today!

HEWITT
DOCKS - LIFTS - PONTOON LEGS
hewittrad.com

CHANNEL
MARINE & SPORTS, INC.
320-597-5975
channelmarineandsports.com
101 4th Street SW • Richmond, MN

Aggregate ♦ Asphalt ♦ Ready-Mix



Knife River delivers high quality construction materials and services throughout Minnesota. We provide aggregates, concrete ready-mix, and asphalt paving services for residential, commercial and public construction projects.



Join Our Team!
Great Benefits!
Strong Future!

KNIFE RIVER

Knife River is an equal opportunity/affirmative action employer.

www.kniferiver.com • 320-251-9472

THE CABIN'S OPEN. IS YOUR COVERAGE?

Make sure your lake place and toys are actually covered this season.



ALLOYINSURED.COM
Home • Auto • Farm • Business • Life • Rec

Enjoy The Stearns County Fair!

MBC Drainage LLC. *Established in 1975*

Howard Marthaler 320-250-2984 • Jason Marthaler 320-249-6062
Cody Marthaler 320-429-1934 • Dominic Marthaler 320-429-5973

- Ditching • Tiling • Excavating
- Ag Waste Systems • Jetting

1800 2nd St. S. • Sauk Centre, MN

LITTLE BUCKS FOAM

SPRAY FOAM INSULATION



FREE QUOTES!

COMMERCIAL & RESIDENTIAL
HOMES, OUTBUILDINGS & ROOFING

320-250-7597 | LittleBucksFoam.com

Main Street SMOKE SHOP

E-CIGS | CIGARS | CIGARETTES
VAPE | ROLLING | TOBACCO | INCENSE

320-352-4080
201 Main Street S., Sauk Centre, MN 56378



MESSER
ATTACHMENTS

Customer Satisfaction
Guaranteed!

Attachments you can count on!

Take a look at our attachments at
the fair in the machinery area.

**BRUSH
MOWERS**



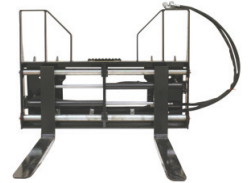
**TREE &
POST PULLER**



GRAPPLES



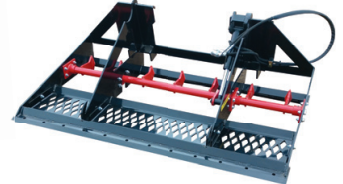
**HYDRAULIC
PALLET FORKS**



**TELESCOPING
BOOM**



**LAND
LEVELER**



**BALE
SQUEEZER**



**SNOW
BLOWER**



OTHER MESSER ATTACHMENTS: Rock Buckets, Tree Scoops, Brush Grapples, Snow Bucket, Material Buckets/Grapples, Manure Forks/Grapples, Wood Splitter/Tree Shear, Sand Spreader, Bale Spears, Loader Plates & Adapters, and more!

Check out videos on our website
at www.messerattach.com!

Located 1.5 miles west of Sauk Centre
at 42739 County Road 184

320.352.3477

LIKE US ON FACEBOOK!





MODERN FARM EQUIPMENT

Your Go To Dealer For These

QUALITY PRODUCTS



NEW HOLLAND
Built to Sustain.



KIVI-PEKKA
STONE PICKERS



KRONE



Reinke
MORE RIGHT THAN RAIN
Center Pivot Irrigation



Sukup



SALFORD

PIERZ, MN
320-468-2161
Hwy. 27 West

SAUK CENTRE, MN
320-352-6543
Hwy. 71 South

www.modernfarmequipment.com

THE BOOT SHACK

WHERE THE BOOTS FIT BETTER!



\$25 OFF a purchase of **\$80 OR MORE!**
Expires 7/4/26
MUST PRESENT COUPON

ROOSEVELT ROAD, ST. CLOUD

WOW

WALKS-ON-WATER, INC

32'w/8' Patio,
Thru Flow
Deck

50120 Vertical
Boat Lift

Check
These Out!

\$5,999

\$6,999

No Maintenance!

Prices subject to change

8430 Highway 10 | Clear Lake, MN 55319

320-743-3333

HOURS: 9:00 a.m. - 5:00 p.m. Monday thru Friday

info@walksonwater.com | www.walksonwater.com



MORE COMFORT
LESS COST



LOCALLY OWNED AND OPERATED

SPECIAL FINANCING
AVAILABLE



AFFORDABLE ADJUSTABLE BEDS

WE DELIVER

Cloud 9
MATTRESS SUPERSTORE
WAITE PARK, MN

Waite Park • 320-230-3400 • www.cloud9matt.com
West on Division, next to Anton's, in the Riverwood Mall

Talamore™

SENIOR LIVING
Saint Cloud

CALL 320-433-5815 TO REQUEST AN INFO PACKET

COMFORT. CARE. COMMUNITY.

Our community is thoughtfully designed to be welcoming for residents, families, friends, and staff. Along with beautiful apartments and exceptional care, we offer plenty of spaces to relax with a cup of coffee or join an activity.



CARING STAFF



CLUB ROOM BAR



LOUNGE

CALL 320-433-5815 TO SCHEDULE A TOUR OR TO REQUEST A FREE INFO PACKET

Your FREE info packet is full of great info about Talamore, including:

- Location Overview
- Unit Floor Plans
- Testimonials
- Activities Calendar
- Building Amenities
- Pricing & More
- Dining Menu
- Care Options

215 37th Avenue North, Saint Cloud, MN 56303 • StCloud@TalamoreSeniorLiving.com

INDEPENDENT LIVING • ASSISTED LIVING • MEMORY CARE





Enhancing Lives in Rural America

844-426-6733
Compeer.com

806 3rd St. S • PO Box 608
Waite Park, MN 56378



Lane Myer
Ag Lender
320-448-9620



Shannon Nelson
Ag Lender
320-290-6860



Jodi Keehr
Home Mortgage Lender
320-241-7853



Rachel Molitor
Crop Insurance Agent
320-247-7607



Brad Herkenhoff
Dairy Lending Specialist
320-437-1638



Jen Athmann
Ag Lender
320-247-3148

Your on-the-farm lender



**DRIVE-THRU ATM
OPEN 24/7**

located in our drive-thru at the bank, our ATM offers you 24/7 access to cash, quickly and conveniently without ever having to leave your vehicle!

YOUR HOMETOWN BANK

LITTLE FALLS
1201 1st Ave NE | 320-632-9740

RICE
750 Cty Rd 21 | 320-393-4200

ROYALTON
412 N Hwy 10 | 320-584-5522

SAUK CENTRE
423 Main St S | 320-352-5771

Pine Country Bank™
Member FDIC Equal Housing Lender
pinecountrybank.com

FUEL WITH MUSCLE



Prompt service & competitive pricing

**RAHN'S
OIL & PROPANE**
320-256-3680
www.rahnfuels.com

Fuel & Propane Bulk Delivery & Transport

**BCC Breitbach
CONSTRUCTION CO.**

- General Contractors
- Design/Build
- Construction Management

Have fun at the Fair!

Elrosa, MN 56325
320-697-5525



**RAHN'S
CUSTOM AG-BAGGING**
320-256-3680




- Haylage, Silage & High Moisture Corn
- 8', 9', 10' & 12' Baggers, Roller Mills & Hammer Mills for Rent
- Bags for sale

Hey Kids - join our
“WALL OF FAME”
AT THE STEARNS COUNTY FAIR

The Sauk Centre Conservation Club will have a Wall of Fame display at the fair in the conservation building for kids to have pictures and stories about their hunting, fishing, gardening – anything outdoors – that they do!

To Submit your photo and story
You can e-mail sccc.walloffame@gmail.com or mail to SC Conservation Club P.O. Box 42, Sauk Centre, MN 56378.

**PLEASE ADD: NAME, PARENTS NAME, AGE, AND PHONE NUMBER
AGES 0-18 YEARS ONLY | PLEASE SUBMIT BY JULY 15, 2026**



EXAMPLE
Erik Larson caught his first fish, a perch, on Little Sauk lake this summer!

SUBMIT A PHOTO AND GET ENTERED INTO A DRAWING FOR A PRIZE!

Also at the Conservation building this year...

- A **HUGE** 24 ft. aquarium
- Trout pond – kids can fish the pond. If you get a tagged fish, you win a prize!
- Play Big Buck Hunter video game

Thank you to the Sauk Centre Trap and Archery teams for helping run the building at the fair!

DO YOU HAVE UNWANTED MOUNTS AT HOME?
Donate or borrow your mounts to the Conservation Club to showcase during the Stearns County Fair!

BUILT TO LAST

YOUR OUTDOOR ADVENTURES BEGIN WITH US
AND END IN MEMORIES!

BANKS
Outdoors

MUDDY

HAWK

EARTH BLINDS
EST. 2008

BACKWOODS
OUTDOORS LLC
320-293-7328
www.backwoodsoutdoorsllc.com

WE ARE A
HAWK | MUDDY | SHADOW HUNTER | AMISH | TITAN
EARTH BLINDS | GREYLIGHT DEALER
42011 State Hwy. 238 | Freeport, MN

HOPE YOU ENJOY *the Fair*

Carefree TRAVEL

320-352-5781

carefree@carefreetravel.cc
Check us out on Facebook!

Set your phone
to airplane mode.
**YOUR NEXT
ADVENTURE
AWAITS!**

WE'D LOVE TO HAVE YOU ON OUR TEAM!

OTR Driver, Customer Service Rep, Carrier Service Rep, Maintenance Technician, HR & Safety/Recruiting Support

320-363-6999

brennytruck.com



Years Strong!



Proud to be your hometown
LUMBER COMPANY SINCE 1971!



Bork Lumber & Steel is a lumber company and building center located in Central Minnesota. Our Mission is to provide our customers with the best service, lumber and building materials available to meet their residential, commercial and agricultural needs.

320-243-7815 • borklumber.com • 18508 County Rd 130, Paynesville, MN 56362

AUSTIN'S CLEANING SERVICE ACS

**AIR DUCT CLEANING
CARPET CLEANING**

Commercial & Residential

Cell 320-266-0818
Home 320-351-6489

PLUS! CARPET REPAIR
WATER DAMAGE RESTORATION
WINDOW CLEANING
COMMERCIAL OFFICE CLEANING
CONSTRUCTION CLEANUP

GIVE US A CALL TODAY!

Locally Owned & Happily Operated by Kerry & Lynnae Austin

Small Town, Big Value... Since 1928

A.M. MAUS & SON

MINNESOTA NICE PROMISE
10 Year or 150,000 Mile Powertrain Warranty

21 MAUS DRIVE | PO BOX 130 | KIMBALL, MN 55353
Sales Hours: Mon.-Fri. 8 am-6 pm | Sat. 8 am-2 pm

RAM DODGE CHRYSLER Jeep

320-398-3210 | 800-510-2732 | 320-398-3212 fax | www.AMMaus.net

GC Granite Creations, Inc.

Providing Affordable Countertop Installations

Turn to a reliable countertop store in Paynesville, MN

Updating your kitchen or bathroom countertops doesn't have to cost an arm and a leg. If you're ready to replace your counters, turn to Granite Creations, Inc.

We offer fast and affordable countertop installations in the Paynesville & Willmar, MN area. We provide services throughout the entire state of Minnesota and extend our reach to Iowa, Wisconsin, as well as North and South Dakota.

COME SEE OUR INDOOR SHOWROOM!
You can choose from a variety of marble, quartz and granite options.

Not sure what material to install?
Our experienced staff can help you select the right option for your space.

granitecreationsonline.com • melissa@granitecreationsonline.com
320.243.3030 • 27548 Business Hwy 23 E, Paynesville, MN 56362

A&C FARM SERVICE, INC.

Jct. Hwys. 55 & 23 • Paynesville
320-243-3736 | www.ACFarmService.com

NEW HOLLAND AGRICULTURE
YAMAHA KIOTI VERSATILE
KINZE GEHL J&M JCB
McCORMICK Vermeer WESTFIELD Demco CHANDLER EQUIPMENT CO.
MEYER'S Equipment Manufacturing Husqvarna
Auto Value Parts Stores
MANTOU Yetter Land Pride TORO Simplicity
FELLING TRAILERS ALOMA

Avon cabin cafe

320-356-7198
105 Avon Ave S • Avon, MN
Find us on

OPEN EVERY DAY
7 am to 2 pm

Stop at the the **STAR Publications** booth.
Subscribe or renew a subscription to the Star Post or Sauk Centre Herald at the Stearns County Fair and receive a

\$15.00 Gift Certificate
for our restaurant!

Stearns County Fair DEMOLITION DERBY

Sponsored by Community Connection of Sauk Centre

July 30 - August 1 • 7:30 p.m.
Grandstand, Stearns County Fairgrounds, Sauk Centre

Join a tradition that has been a part of our fair for more than 40 years!

All cars will now be teched inside the pit area. When you come in the pit, circle around the fence starting on the West side working your way around the East fence. If trailered, leave car on trailer. We will start teching cars at 5:00 p.m.

YOU MUST REGISTER YOUR CAR AT THE GATE NO MATTER WHAT.

If you do not run, we will refund your entry. All cars must be IN THE GATE by 6:30 p.m.

Late entries will be allowed until 6:45 p.m. - NO EXCEPTIONS. Pit meeting starts at 7:00 p.m. -

ALL DRIVERS MUST ATTEND. We need to get this show started on time!

CLASSES AND HEAT SCHEDULE FOR 2025!

THURSDAY:

Compact Limited Weld
 Full Size Stock Class
 Full Size Limited Weld
 1/2 Ton Trucks - Chain Stock
 2 man Van Class
 - Front Wheel Only

FRIDAY:

Mini Limited Weld
 Full Size Stock Class
 Van Class - Front Wheel Only
 1/2 Ton Limited Weld Trucks
 HoBo Front Wheel Dr. Cars

SATURDAY:

Compact Limited Weld
 2 Man Team Light Weld Class
 HoBo Front Wheel Dr. Cars
 1/2 & 3/4 Ton
 Limited Weld Trucks
 Full Size Limited Weld

PRIZES:

Trophies down 3 places. Pay down 3 places.

- Limited Weld classes will be paid: \$1,550, \$750, \$350
- Stock and Chain Class will be paid: \$1,250, \$750, \$300
- HoBo Classes will be paid 3 places: \$800, \$600, \$300
- Team Light Weld Class - 1st Place - \$4,000 2nd Place 2,000

Each class will have a Mad Dog and will receive \$100 + trophy.

Best Paint will receive \$100 + trophy - judged by track officials.

GUARANTEED PAYOUT IN ALL CLASSES WITH 5+ CARS

**WE WILL NOT BE TAKING REGISTRATIONS
 BY MAIL.**

All registrations will be at the gate.

Please ensure that you AND your pit crew have driver's licenses, notarized and signed parental consent forms with ID's and your registration form filled out, both available at www.communityconnectionsaukcentre.com

For more information on rules *(During business hours only)*

Josh Bueckers - 320-290-8888

Craig Tschida - 320-232-7187

Jeff Messer - 320-292-0208

Kyle Bueckers - 320-248-0193

**SPECTATOR
 GRANDSTAND**

**ENTRY FEE:
 \$12.00 All Ages**





Things to do



All photos taken at the fair may be used for Social Media

Gardening for fun

Wednesday, Friday, & Saturday
10 a.m. to 3 p.m.

Master Gardener Booth

Hands-on experience for all ages from potting to learning how to care for a live plant.

All of your gardening questions will be answered.

Auto Cross

Sunday at 1-4 p.m. | Grandstand

Children's Pedal Pull

Sunday at 1 p.m.
Next to Children's Play Area

Wed. 12-9 p.m. | Thurs.-Sat. 10a.m.-9p.m. | Sun. 10a.m.-6p.m.

Adventures in Agriculture

Hands-on Kids Activity
Exploring Agriculture!
Agriculture Building

Barn Quilt Confest

Theme: Red, White, and Blue for America's 250th birthday

Help Bring Beauty and Color To The Stearns County Fair. Design and Paint a 4' x 4' Barn Quilt to be Displayed on the barns at the Fairgrounds. Plywood Will Be Provided By the Stearns County Fair.

Medallion Hunt

THURSDAY-SATURDAY

CLUES RELEASED AT:

9A.M. **11A.M.** **1P.M.** **3P.M.**

Cash prize!

The Fair Association reserves the right to limit the number of entries. Your Barn Quilt will be displayed at the Fairgrounds so use exterior paint and a clear protective sealer

1st Place Winner - Blue Ribbon & \$200
2nd Place Winner - Red Ribbon & \$100
3rd Place Winner - White Ribbon & \$50

Contact Jackie or email jackiesb@mainstreetcom.com to enter and make arrangements to pick up your plywood.

Brand New Machinery by Stearns County Machinery Implement Companies



Entertainment

YOUR GUIDE TO BIG FUN!

Wednesday, July 29 | Thursday, July 30
Friday, July 31 | Saturday, August 1 | Sunday, August 2

Full line up
on pages
56-57!

Music ENTERTAINMENT ALL FREE AT THE FAIR!

Donny Brang • Gig Noonan
Pam & Sherwin Linton & The Cotton Kings
Dos Coronas • IV Play
If Nothing Else
Sandy Weisser Music

IVPlay introduced themselves in 1999. The band is based out of Mankato, Minnesota. They play most of their dates in the upper mid-west, Minnesota, Iowa, Wisconsin, Michigan, North Dakota, and South Dakota. They play a variety of songs such as those from Motley Crue, Bruno Mars, Styx, Lady Gaga and more.

If Nothing Else is a band born where the Midwest meets the South. *If Nothing Else* is redefining Northern Rock—a high-octane fusion of anthemic rock, outlaw country, and blue-collar storytelling. Fueled by pounding drums, searing guitar riffs, and lyrics that hit as hard as the northern winds, their music is for those who live for the grind, the glory and the good times in between.

Donny Brang is an acoustic guitarist and vocalist from Central Minnesota and has decades of LIVE performing experience. Starting at a very young age, he had the opportunity to appreciate and learn many genres of music. He performs a wide variety of great songs from yesteryear to today for all ages to enjoy. His approach to REAL LIVE solo performing is based on his bare-bones, from the heart style without the use of any recorded or pre-processed effects...simply REAL MUSIC being played by a REAL MUSICIAN on a REAL INSTRUMENT.

- Ranch Rodeo
- Daycare Day
- Hot Wing Eating Contest
- Auto Cross
- Crescent City Amusements
- 4-H Arts-In Performances
- Demolition Derby
- Antique Tractor Parade
- Medallion Hunt
- Hot Dog Eating Contest
- Children's Pedal Pull
- Gardening For Fun
- Rooster Crowing Contest
- Barn Quilt Contest



BELGRADE STEEL TANK



belgradesteeltank.com

405 Lowery Ave • Belgrade, MN 56312

320-254-8246



Luxury
Trailers now
available!

Bueckers

BiFFieS Inc.
(320)256-2727



Harland &
Jennifer Hector,
owners

GREAT FOR:

- Handwash Station
- Construction Sites
- Weekend & Monthly Rentals
- RV Tank Pumping
- Handicap Toilets
- House Parties
- Community Events
- Weddings

WWW.BUECKERSBIFFIES.COM | MELROSE, MN



CENTRAL BI-PRODUCTS
BETTER FEED MAKES BETTER FOOD.

GOOD LUCK TO ALL COUNTY FAIR PARTICIPANTS!

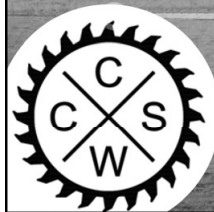
LONG PRAIRIE & REDWOOD FALLS, MN - ESTHERVILLE, IA

A DIVISION OF
Farmers Union
Industries

320-732-2819 | fuillc.com | f

25498 US Highway 71, Long Prairie, MN 56347

CROW COUNTRY SAWMILL AND WOODWORKING



Jeff DenHartog | 320-270-7802
Belgrade, MN 56312

crowcountrysawmill@outlook.com

crowcountrysawmill.square.site

See us on Facebook!



Why choose

WM

WWW.WM.COM

Manage your
accounts and
billing, request
service, and
view pickup
schedules all
in one place!



**Residential Waste
and Recycling Pickup**



**Roll-Off
Dumpster Rental**



• Residential • Commercial • Farm Pickup • Demolition • Recycling

CONTACT US TODAY! www.wm.com



Stearns County Fair Forage Analysis Contest 2026 Entry Form



Use one form per entry. Entries must be received by July 1, 2026. **Corn Silage only contest for 2026**

Farm Name _____ Contact Person(s) _____

Address _____

City, State, Zip _____

County _____ First-Time Entrant? ___Yes ___ No

Telephone _____ Email _____

<p>For office use only:</p> <p>Lab No. _____</p> <p>Check No. _____</p>
--

Contest Division (See reverse side for specifications): Corn Silage Only Contest for 2026		
<p>___ A3 Standard Corn Silage</p> <p>___ A4 BMR Corn Silage</p>	<table border="1"> <tr> <td> <p>Complete for Corn Silage:</p> <p>Processed ___Y ___N</p> <p>Complete for Organic:</p> <p>Organic ___Y ___N</p> </td> </tr> </table>	<p>Complete for Corn Silage:</p> <p>Processed ___Y ___N</p> <p>Complete for Organic:</p> <p>Organic ___Y ___N</p>
<p>Complete for Corn Silage:</p> <p>Processed ___Y ___N</p> <p>Complete for Organic:</p> <p>Organic ___Y ___N</p>		
Sample Information:		
Variety: _____	Farm Sample No. _____ (1, 2, 3, etc. – to match entry forms with samples)	
	Date of harvest _____	

Entry fee: \$45 per entry, check made payable to **Dairyland Laboratories, Inc.** Sample analyses will be emailed or mailed to entrants after all samples have been analyzed for the contest.

Send entry form (protected from moisture) with sample to: Dairyland Laboratories, 919 S Lincoln Avenue, Sauk Rapids, MN 56379. Please feel free to call Dairyland Labs at (320) 240-1737 with any questions. **It is the responsibility of the entrants to ensure delivery to Dairyland Labs in Sauk Rapids prior to the appropriate deadline date. Samples dropped at affiliate laboratories will be charged shipping.**

Prizes: Premium checks will be awarded to the top three entrants in each division. Winners will be showcased at the Stearns County Fair, Sauk Centre, MN between July 29 and August 2, 2026. Need not be present to win.

I certify that the above information is correct to the best of my knowledge, that the sample was taken according to the conditions of entry, and that the sample is from the lot described and entered. By signing below, I grant permission to publish my farm name/name in the announcement of contest results.

Signed _____ Date _____

Stearns County Fair Forage Analysis Contest Organizing Partners: Dairyland Laboratories, Inc., Stearns County Fair, and Stearns County Farm Bureau

2026 Stearns County Fair Forage Analysis Contest Rules and Conditions

The Forage Analysis Contest is designed to encourage quality forage production.

All categories/entrants:

- Samples must be grown on the farm of the entrant.
- Samples must be from a regular forage production field and harvesting system.
- A farm/ranch unit may enter as often as desired in as many divisions as desired.
- Not more than one finalist per farm/ranch unit will be allowed in any one division.
- A farm/ranch unit may win no more than one grand or first-place prize.

Harvest year	Sample size	CATEGORY	Crop/plant/sample specifications		Samples analyzed for (expressed on a dry matter basis):
2025	2 gal.	Standard Corn Silage (non-BMR)	Must be whole plant, recommended chopping height 6" - 8". Must contain > 75% standard variety.	All silage samples: Must be ensiled in a normal preservation process and show signs of fermentation. Use of a preservative is allowed. Additives affecting fiber content or any other adulteration will disqualify the sample. No Baleage samples allowed.	Corn Silage: Dry matter, crude protein, acid detergent fiber (ADF), neutral detergent fiber (NDF), neutral detergent fiber digestibility (NDFD), and milk per ton.
2025	2 gal.	Brown Midrib (BMR) Corn Silage	Must be whole plant, recommended chopping height 6" - 8". Must contain > 75% BMR variety.	All silage samples: Must be ensiled in a normal preservation process and show signs of fermentation. Use of a preservative is allowed. Additives affecting fiber content or any other adulteration will disqualify the sample. No Baleage samples allowed.	

Judging:

- **The decision of the judges in all matters will be final.**
- 3 finalists are selected in each division.
- The Corn Silage finalists are chosen on Milk Per Ton.
- Finalist samples are judged as follows: 70% Analysis; 30% Visual

Sample preparation:

All silage entries: Place at least 2 gallons in a clean plastic bag and seal. Store immediately in a freezer or cold place until mailed. Mail on a Monday or Tuesday to help ensure that the sample will arrive in good condition.

All entries: Label each sample clearly with your name, address, category, and Farm Sample Number. Ensure submittal form is easily accessible and protected from sample moisture. Send the sample(s), entry form(s) and \$45 entry fee per sample (check made payable to **Dairyland Laboratories, Inc.**) to: Dairyland Laboratories, 919 S Lincoln Avenue, Sauk Rapids, MN 56379. Phone 320-240-1737.

Corn silage entries must be received by **July 1, 2026**



LEVEL

GROUND


Concrete Leveling

Lift & Stabilize Sunken Concrete!

- Raising • Filling
- Leveling • Patching

WE CAN FIX IT!
Call Us Today!
320-241-2720

levelgroundmn.com



Melrose Implement, Inc.

320-256-4253

SALES • PARTS • SERVICE
37364 Co Rd 13 • Melrose, MN 56352-8615
www.melroseimplement.com

INTERSTATE

Service Center

256-2160

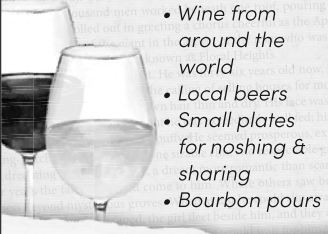
216 Country Club Road
Melrose, MN 56352

Scott Bussmann,
Owner

Free alignment with four new tires!


BABBITT'S

WINE AND BOURBON BAR



- Wine from around the world
- Local beers
- Small plates for noshing & sharing
- Bourbon pours

Follow us on Facebook & Instagram!



219 Oak St S., Sauk Centre, MN (1 block from public docks)
320-351-9463 | www.babbittswinebar.com

**YES
WE CAN
DO THAT.**



SIGNDesign

320-352-6577 ♦ starpub.com

CUSTOM BANNERS, SIGNS, DECALS & MORE!

LOCATED IN THE SAUK CENTRE HERALD OFFICE

Please thank the 2025 4-H Blue Ribbon Livestock Auction Supporters:

Auction, Plaque Sponsors & Livestock Project Development:

A & H Concrete
 Ag-Vanced Crop Solutions
 Albany Chrysler Center
 Albany Mutual Telephone
 Albany Sandblasting
 American Foods Group LP
 Anderson Family Farms
 Arnzen Construction Inc.
 Belgrade Co-op Association
 Belgrade Livestock
 Bork Lumber & Steel Inc.
 Byron Fischer
 Centra Sota Co-op
 Central Equipment Sales
 Central Livestock
 Central MN Seeds LLC
 Compeer Financial
 Cornerstone Ag Services
 Dairy Star
 Daryl Zenzen
 Dean Berckes
 Dragonfly Children's Respite
 Ecker Feed Service
 Famo Feeds Inc.

Farmers & Merchants State Bank
 Farm-Rite Feed Co.
 Fiedler Finishing
 FPI Paving
 Freeport State Bank
 Freeport Veterinary Service
 Friends of 4-H
 G&B Sales and Service
 Gerald Meyer
 Greenwald Elevator
 Hartwig Trucking
 Hennen Floor Covering Inc.
 Jennifer Wagner-Lahr
 Joe Molitor
 K & L Real Estate
 Kulus Feed Store
 Kyle Jochman
 Lee's Ace Hardware
 Legendary Acres
 Long Prairie Livestock
 Luxemburg Feed Services Inc.
 Magedanz Farms Inc.
 Mayer's Repair
 McAndrews Dairy LLC
 Mechanical Brothers LLC
 Meyer Dairy LLC
 Midwest Ag Advisors
 Minnesota National Bank
 Munson Feed Co.



Special Thank You to:

Mid-American Auction
Auctioneers

HF Photography - Auction Photos

Freeport State Bank - Clerking

Northwood Logistics & Trucking
 On The Money Hoof Care
 Paynesville Farmers Union Co-op
 Rahn's Oil & Propane
 Redfield LLC
 Rich Prairie Livestock
 Rieland Seeds
 Ritter Trucking
 Sand Country Acres

Scepaniak Land & Grain
 Schlauderaff Implement
 St. Rosa Lumber Inc.
 Stearns County Corn Growers
 Steffes Auctioneers
 Strawberries Galore & More
 Wagner Dairy LLC

2025 Livestock T-Shirt Donor:



**Join us for the 2026 4-H Blue Ribbon Auction
 Sat., August 1 • 10:30 a.m. in the Show Arena**



OPEN CLASS



SAUK CENTRE, MN

GENERAL RULES & REGULATIONS



To All Stearns County Fair Animal Participants

This includes: Sheep, swine, llama, goats, dairy cows, beef cows, saddle horses, draft horses, rabbits & birds.

We have done some rearrangement of stalling for some of the animals at our fair. We hope you enjoy the new stalling.

If you have any problems, please share them with your superintendent.

We also ask that during fair hours that all participants with animals at the fair DO NOT block walkways in the buildings while brushing, grooming, prepping, saddling or harnessing of your animals. This is for the safety of our fair goers.

Thank you again for participating in our fair and helping to make it such a great success.

If you have any questions or concerns, please contact our President – Tom Schmitz, Vice-President – Steve Frericks, Secretary/Fair Manager – Jackie Spoden-Bolz, or Treasurer – Jodie Deschene.

OPEN CLASS GENERAL RULES & REGULATIONS

1. Rules and regulations will be strictly adhered to.
2. Non-Livestock entries will be received before 11 a.m. on Thursday except those listed. Absolutely no premium paid except those listed. A written entry list must be sent to the Open Class Entry Superintendent by July 21: Joyce Schoen, 36 Anjo Dr., Sauk Centre, MN 56378.
3. No exhibitor shall be allowed to make more than one entry in any one lot, except poultry - two per lot.
4. All Open Class exhibitors must enter by July 21 to reserve a stall for livestock. Entry forms on pages 60-61.
5. Entries for premiums in the individual lots of grain, field seed and fruits, shall not be permitted to appear as parts of collections.
6. No article or animals shall compete for more than one premium except livestock.
7. Every article in competition must correspond in number and description of the premium list, and be in its proper class, in order to obtain premiums. No change or alteration will be permitted after the books are placed in the hands of the judges.
8. Stock and articles must be entered in the name of bonafide owners; grains, vegetables, fruits, dairy products and domestic manufacture must have been raised or made by the exhibitors thereof during the past year.
9. No animals or articles will be assigned a place on the grounds until entries have been made.
- 10. Where required each entry tag shall be securely attached to the entry itself or the stall, pen or receptacle in which it is shown. When showing cattle, the exhibitor must display his number on his back visible to judges.**
11. All articles entered are to remain on exhibition until **4:00 p.m.** on the final day of the fair, except where noted.
12. Most livestock entries, must be in by 9:00 p.m. Wednesday. Draft Horses must be registered by show. Overnight stay is optional and must be pre-approved by noon on Friday. Beef & Sheep will be a one day by the superintendent to plan for stalling. Check in required at least one hour prior to the show. All livestock must remain in place until Sunday evening at **4 p.m.**, the final day of the fair, except where noted. Pickup of non-livestock open class entries between **5-6 p.m.** Failure to comply with this rule will cause forfeiture of premium money and awards.
13. Premium checks may be picked up after 4:00 p.m. on Sunday or they will be mailed.
14. Those in charge of the different divisions shall conveniently group each lot in the various classes.
15. The fair will take every precaution to preserve all articles and stock on exhibition, but will not be responsible

for the loss or damage that may occur in the delivery, exhibition or removal of exhibits.

16. The management will do their best to arrange space for all exhibitors, but after the present facilities are exhausted, the board reserves the right to close entries at any time.

17. The Superintendent of the division or some other person appointed shall assist the awarding committee as clerk and shall keep a record of the awards made. This record, when completed, shall be signed by the awarding committee and returned to the secretary.

18. When ribbons are awarded they shall be as follows: first premium blue, second red, third white.

19. All awards shall be made by comparison of the individual merits of the entry.

20. Any interference by exhibitors to influence or dictate the decision of the judges will be sufficient cause for excluding his or her entry from competition and should be reported to the secretary.

21. No appeal from the decision of the awarding committee shall be allowed. An exhibitor may make protest to the superintendent of the division at the time of the award who may then require the judges to give reason for such placing.

22. Premiums shall not be awarded on articles or animals of inferior merit. Regardless of the numbers in competition for a premium, second premium as merit may warrant: stating the reason in writing when requested.

23. Special premiums may be offered by interested persons for entries which conform to the general classification of the Fair Association.

24. All exhibits not called for within three days after the last day of the Fair will be forfeited to the Association.

25. If the receipts should prove insufficient to meet all demands, the secretary reserves the right to first pay all bonafide expenses of the Fair and pay premiums pro rata with balance on hand.

26. No person will be permitted to distribute advertising matter on the grounds except from their place of business or exhibit. The tacking or posting of any advertisement bills, cards, etc. other than within the space occupied by exhibitors, is prohibited unless a request is made in writing and approved by the Stearns County Fair Association. The distribution of the hand bills, flyers, etc. will not be permitted.

27. Only livestock entered in a division, class or lot may be exhibited at the fair.

Continued on page 30

NEW Livestock squeeze chutes, mobile loading chutes, feed bunks & more!

TUFF BUILT LIVESTOCK EQUIPMENT

COME CHECK THEM OUT!

AUCTIONS
HELD EVERY WEDNESDAY

- Professional Marketing
- Mailing List to over 6,000 potential buyers
- Extensive Advertising Program
- Live Online thru Cattle USA & DVAuction

AT OUR MOTLEY & PERHAM LOCATIONS
PROFESSIONAL AUCTIONEERS & RINGMEN
Special Saturday Bred Cow, Bull & Slaughter Cattle Sales - December-April

Tri-County STOCKYARDS LLC

Mitch Barthel
Owner/Auctioneer
218-639-5228

218-352-6546
32638 US-10
Motley, MN 56466

View & bid live at cattleusa.com & dvauction.com | TRICOUNTYSTOCKYARDS.COM

Central MN Seeds, LLC
BELGRADE, MN

Outstanding Products • On Farm Field Visits
Personalized Visits • Localized Yield Data

CMSeeds

Channel **PIVOT BIO** **AGASSIZ** **CLIMATE FIELD VIEW**
A Better Nitrogen SEED & SUPPLY

SELLING Corn, Alfalfa, Sorghum Soybeans—Both XtendFlex and Enlist Chemistry Options

Kurt Herickhoff 320-760-8183	Gregg Weller 320-808-3041	Owen Rajdl 320-815-0676	Byron Fischer 320-815-0233
--	-------------------------------------	-----------------------------------	--------------------------------------

WWW.CENTRALMNSEEDS.COM

REVERSE YOUR NEUROPATHY
and suffer no more!

SCAN ME

Kasi Zack, CNP
www.woodlandshp.com

48 29th Ave. N • St. Cloud • 320-240-0300

WOODLANDS
HEALTH & PERFORMANCE

Skid Steer Attachments **Grain Master Conveyors**

BRANCH MANAGER ATTACHMENTS

Thielen Machine & Welding
TMW Attachments
320-453-3525

- Custom Welding
- Machining
- Custom Manufacturing
- Fabricating

522 Meeker Avenue East
Eden Valley, MN 55329
Tel: 320-453-3525
info@tmwattachments.com
tmwattachments.com

BUYING ALL METALS!

WE HANDLE GARBAGE AND ELECTRONICS

CRANE AVAILABLE!
ROLL-OFFS | STEEL DEPARTMENT | CARS

ALBANY RECYCLING CENTER

320-845-2747 « CONVENIENTLY LOCATED NEXT TO I-94

JOIN OUR TEAM



- 401(K) MATCH
- PROFIT SHARING
- TRAINING
- CAREER GROWTH
- STRONG TEAM CULTURE

NOW HIRING

We believe in supporting work-life balance, prioritizing employee well-being, and offering great benefits for our team. Join a team built on craftsmanship and community.



WORK HARD, LIVE WELL.
→ coldspringusa.com/careers



LIVESTOCK DEPARTMENT

All Open Class Entries must be made by mail by July 21

1. No exhibitor of livestock shall be allowed to make more than one entry in any one lot.

2. Exhibitor of livestock may be required by the secretary to make affidavits that such livestock has not been exposed to contagious or infectious disease within the last three months.

3. Exhibitors must keep their stock, stall and pens in good neat condition and open for inspection from 9 a.m. to 9 p.m.

4. Exhibitors of livestock are responsible for knowing when their stock will be judged. Stock must be in the show ring promptly after being called. An exhibitor failing to comply with this order will be ruled out of competition.

5. All classes must be taken out and judged in the show ring pending weather conditions and safety unless specified by superintendents.

6. Ample sheds and pens for livestock on exhibition and competing for premiums will be furnished. Exhibitor must provide own bedding.

7. All animals under exhibition shall be shown to the judges under the supervision of the respective superintendents.

8. Each exhibitor must pay the appropriate entry fee, \$3.00 per lot for cattle, sheep and goats. Horses are \$5.00 entry fee, and an additional \$3.00 for box stalls if available.

9. Exercising livestock exhibits. All exhibitors must get permission from the barn superintendent prior to exercising animals.

10. When filling out your Open Show Livestock entry form, make sure you enter the correct class. Switching classes will not be permitted after the entry deadline.

NO OPEN CLASS ENTRY FORMS WILL BE ACCEPTED AT THE FAIR.

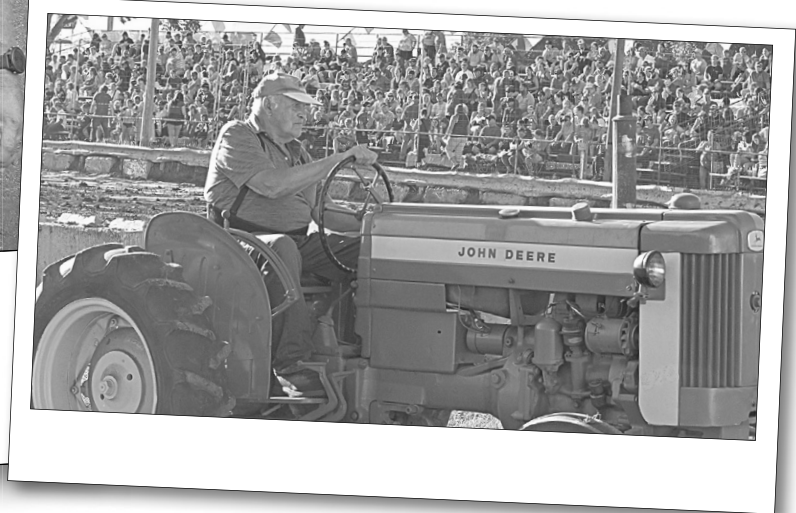
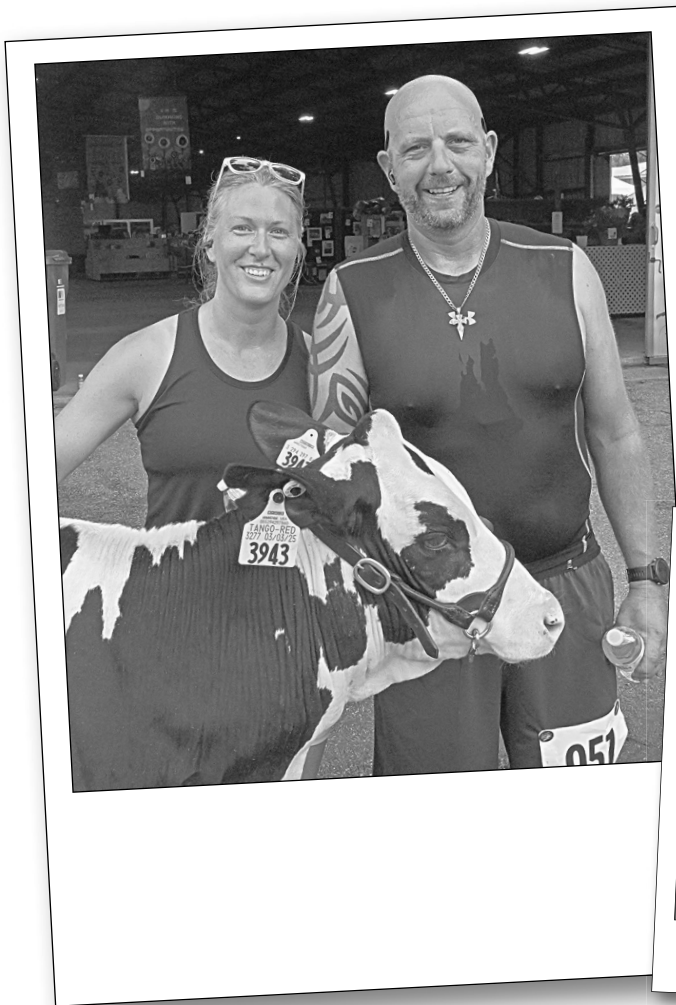
Open Class Animal Health Requirements

The following information can also be found on the Minnesota Board of Animal Health website.
<http://www.mn.gov/bah/>

Health Requirements for Livestock and Poultry Originating from Minnesota:

Livestock or poultry known by the exhibitor to have an infectious, communicable disease or to have been exposed to an infectious, communicable disease or to be from a quarantined herd or flock may not be entered in an exhibition.

- All livestock will be inspected by the official veterinarian on the opening date of the exhibition. The official veterinarian will order the immediate removal to a quarantine facility or removal from the exhibition premises of any livestock with symptoms of infectious or communicable disease. Animals placed in a quarantine facility must remain there until removed from the exhibition premises. They may not enter a show ring. This includes livestock with warts or ringworm or abscess. A statement from a veterinarian that an animal is being treated for these diseases is not acceptable.
- All testing must be conducted prior to the exhibition and a record of the test results on a test chart or Intrastate Health Certificate must accompany the tested animals.
- Poultry test results or origin must be on official forms.



Cattle: The Minnesota Board of Animal Health is requiring that ALL cattle being exhibited be identified with an “official” form of ID. This is a new expectation brought about by the TB outbreak Minnesota experienced a few years back. This system is designed to track the basic premise or origin of a said animal. The official information for these expectations can be viewed at the following website: <http://mn.gov/bah/cattle.html>

This will take you to the Board of Animal Health Website – the page is entitled “Exhibition of Livestock in Minnesota.” Next, click on Cattle Show. This click will bring up a pop-up that says “Cattle must be officially identified.” Click on cattle identified. This will bring up a fact sheet titled “Official Identification for Cattle and Bison.” It includes pictures and supporting wording indicating the kinds of ID’s that are acceptable for the Board of Animal Health ID expectations. They will be in place for all cattle that will move from one site to another, such as to the county or state fair.

Goats, Sheep: Sheep and goats must have an official Scrapie ID or have a registered tattoo along with a breed registry number. No sheep or goat that is within 30 days of giving birth may be exhibited without prior approval from the Board.

Swine: Swine must be officially identified and must:

- have had a negative official pseudorabies test conducted within 30 days prior to the opening date of the exhibitions; or
- originate directly from a qualified pseudorabies - negative herd; or
- originate directly from a Stage IV or V county or area. All 50 states are currently pseudorabies Stage V (Pseudorabies Free Status).

Horses: All horses must be negative to an official test for Equine Infectious Anemia (EIA) within 12 months prior to the opening date of the exhibition. A test is not required for sucking foals accompanying a negative dam. Note: 4-H also requires a negative Coggins test.

Poultry: (except waterfowl and pigeons): animal must be individually identified with a leg or wing band and must be accompanied by a form approved by the Fair Board to show compliance with one of the following: negative test for pullorum-typhoid disease conducted within 90 days prior to the opening date of the exhibition; originate directly from a hatchery or breeding flock that is classified negative for pullorum-typhoid disease within the last 12 months. In addition, turkeys must be accompanied by a certificate or test chart to show that they originate from a hatchery or breeding flock that is classified Mycoplasma gallisepticum clean and Mycoplasma synoviae clean or are negative to a Mycoplasma gallisepticum clean and a Mycoplasma synoviae test within 90 days prior to the opening date of the exhibition.

Rabbits:

1. All Open Class registration, Fee’s and Exhibitor Questions need to go through the Fair Office attn: Joyce Schoen.
2. Exhibitors may exhibit up to five rabbits, but only one rabbit in each Lot.
3. Fair Packets must be picked up at the Fair Office prior to checking in your rabbits.
4. Rabbits checked-in on Entry Day from 10:am-2:00pm, at the Rabbit Barn. Rabbits and any supplies must stay in the check-in area and can not enter the barn before being checked in.
5. Rabbits entered in classes must be a purebred breed recognized by the American Rabbit Breeders Association (ARBA), and they must be intact or unaltered - NOT neutered or spayed.
6. All rabbits will be judged according to the American Rabbit Breeders Association Standards of Perfection (ARBA SOP). The judges decision is final.
7. ALL RABBITS must have a legible permanent tattoo in the left ear that is used for ID and show registration. Pen ink is NOT an acceptable tattoo.
8. All rabbit supplies must be kept in a tote under the rabbit kennels and labeled with the exhibitor’s name.
9. Each exhibitor needs to provide all of their own supplies: hay, pellets, food dish, water dishes, and resting mat. Chew blocks are ok, but no toys or items they can chew up or break.
10. Shavings are provided by the Fair Board.
11. Rabbit travel kennels, and any items that don’t fit under the kennels need to be stored out of the building.
12. Health Checks will be done at check-in and any rabbit with signs of illness will be sent home. No exceptions, variance, or discussion. LEAVE RABBITS HOME IF THERE ARE NOT WELL.
13. Herdsmanship Expectations apply to all exhibitors.

*Have
fun
at the
fair!*



www.stearnscountyfair.com

DIVISION A DRAFT HORSES

Superintendent - Leczi Fleischhacker
320-293-2936

Please submit entries by the listed date on entry form. All Draft Horses must be checked in and stall fee must be paid by Friday at 1 p.m.

Stalls are \$3.00 per stall (not per horse) Entry fee is \$5.00 per lot. Superintendent will assign stalls. Mares with foal will have priority to a box stall. All exhibits must have health certificates (Coggins)

Judging 10 a.m. Sunday.

OPEN CLASS HORSE JUDGING

1st Prize \$15 • 2nd Prize \$12 • 3rd Prize \$10

Class 1 - Belgian

Lot

1. Colt (born after Jan. 1 of this year)
2. Filly (born after Jan. 1 of this year)
3. Gelding
4. Mare

Class 2 - Clydesdale

Lots same as Class 1

Class 3 - Friesian

Lots same as Class 1

Class 4 - Gypsy Vanner

Lots same as Class 1

Class 5 - Haflinger

Lots same as Class 1

Class 6 - Half Drafts/Cross Breeds

Lots same as Class 1

Class 7 - Morgan

Lots same as Class 1

Class 8 - Mule

Lots same as Class 1

Class 9 - Norwegian Fjord

Lots same as Class 1

Class 110 - Percheron

Lots same as Class 1

Class 120 - Shire

Lots same as Class 1



DIVISION B SADDLE HORSES

Superintendent - Leczi Fleischhacker
320-293-2936

Stalls are \$3.00 per stall (not per horse) Entry fee is \$5.00 per lot. Superintendent will assign stalls. Mares with foal will have priority to a box stall. All exhibits must have health certificates (Coggins)

Horse can enter only one class, even if they are double registered (example: Paint/Pinto).

Judging 10:00 a.m. Thursday

Class 1 - Quarter Horses

Lot

1. Colt (born after Jan. 1 of this year)
2. Filly (born after Jan. 1 of this year)
3. Gelding
4. Mare

Class 2 - Appaloosa

Lots same as Class 1

Class 3 - Arabian

Lots same as Class 1

Class 4 - Paint

Lots same as Class 1

Class 5 - Palamino

Lots same as Class 1

Class 6 - Morgan

Lots same as Class 1

Class 7 - Miniature

Lots same as Class 1

Class 8 - Pinto

Lots same as Class 1

Class 9 - Thoroughbred

Lots same as Class 1

Class 10 - Shetland Ponies

Lots same as Class 1

DIVISION C BEEF CATTLE

Superintendent - Ryan Sand
320-293-2724

No exhibitor shall be allowed to make more than two entries in any one lot. \$5.00 per lot will be charged in advance only. Entry forms due by July 21. No bulls allowed except as a calf in the cow/calf lot.

1st Prize \$15 • 2nd Prize \$13 • 3rd Prize \$9

Females

Lot

1. Spring Calf (Jan.-April 2026)
2. Fall Calf (Sept.-Dec. 2025)
3. Summer Yearling (May-Aug. 2025)
4. Junior Yearling (Jan.-April 2025)
5. Senior Yearling (Sept.-Dec. 2024)
6. Cow/Calf (Cow with natural calf at side. Calf born on/after Jan. 1 of current year. Calf may show in individual lot if a separate entry fee is paid.)

No animal will be allowed in the barn that is not entered in a class.

Class 1 - Angus (Reg.)

Class 2 - Hereford (Reg.)

Class 3 - Shorthorn (Reg.)

Class 4 - Simmental (Reg.)

Class 5 - Limousin (Reg.)

Class 6 - Charolais (Reg.)

Class 7 - Other Breeds (Reg.)

Class 8 - Crossbreds/Non Registered

(Classes 1-8 Same Lots)

Continued on next page

HAVE FUN
AT THE

Fair!

JULY 29 - AUGUST 2





Class 9 – Market Beef Steer

(Jan. 1 – Aug. 31 2025)

Class 10 – Market Heifer

(Jan. 1 – Aug. 31 2025)

Class 11 – Dairy Steer (Only Dairy Breeds)

(Jan. 1 – Aug. 31 2025)

Class 12 - Prospect Beef Steer Calf

(Born after Jan. 1 current year)

Class 13 – Prospect Dairy Steer Calf

(Only Dairy Breeds)

(Born after Jan. 1 current year)

**DIVISION D
DAIRY CATTLE**

**Superintendent - Tom Peterson
320-333-2207**

Due to limited space, Open Class Dairy must be pre-approved by superintendent for stalling in dairy barn.

Entries due July 21

Show Day: Wednesday, 9:00 a.m.

Entry Fee: \$5 Per Lot In Advance Only

1st Prize \$15 • 2nd Prize \$10 • 3rd Prize \$5

Class 1 - Holstein

Lot

1. Junior Heifer Calf
(Mar. 1, 2026-May 31, 2026)
2. Winter Heifer Calf
(Dec. 1, 2025-Feb. 28, 2026)
3. Fall Heifer Calf
(Sept. 1, 2025-Nov. 30, 2025)
4. Summer Yearling Heifer
(June 1, 2025-Aug. 31, 2025)
5. Junior Yearling Heifer
(Mar. 1, 2025-May 31, 2025)
6. Winter Yearling Heifer
(Dec. 1, 2024-Feb. 28, 2025)
7. Senior Yearling Heifer
(Sept. 1, 2024-Nov. 30, 2024)

**JUNIOR CHAMPION FEMALE
RESERVE JUNIOR CHAMPION FEMALE**

Lot

8. Junior Best Three Females
(To consist of 3 animals under 2 years of age, none of which have freshened. All bred and at least one owned by exhibitor. Each exhibitor is limited to one entry.)
9. Unfresh 2-Year-Old
(March 1, 2024 -Aug. 31, 2024)

**SENIOR CHAMPION FEMALE
RESERVE SENIOR CHAMPION FEMALE
GRAND CHAMPION FEMALE
RESERVE GRAND CHAMPION FEMALE**

Lot

10. Dry 3 & 4-Year-Old & Under Cow
(Sept. 1, 2023-Aug. 31, 2022)
11. Dry Aged Cow
(Before Sept. 1, 2022)
12. Jr. 2-Year-Old in Milk
(Mar. 1, 2024 -Aug. 31, 2024)
13. Sr. 2-Year-Old in Milk
(Sept. 1, 2023-Feb. 28, 2024)
14. Jr 3-Year-Old in Milk
(Mar. 1, 2023-Aug. 31, 2023)
15. Sr. 3-Year-Old in Milk
(Sept. 1, 2022-Feb. 28, 2023)
16. 4-Year-Old in Milk
(Sept. 1, 2021-Aug. 31, 2022)
17. 5-Year-Old in Milk
(Sept. 1, 2020-Aug. 31, 2021)
18. Aged Cow in Milk
(Before Sept. 1, 2020)
19. Three Best Females
(Three females, any age, all bred and at least one owned by exhibitor. Each exhibitor limited to one entry.)
20. Produce of Dam
(To consist of 2 animals, any age, the produce of one cow, the dam must be named. Each exhibitor limited to one entry from the same dam.)
21. Daughter and Dam

Class 2 - Ayrshire

Lots 1-21, Same premiums as in Class 1

Class 3 - Brown Swiss

Lots 1-21, Same premiums as in Class 1

Class 4 -Crossbred

Lots 1-21, Same premiums as in Class 1

Class 5 -Guernsey

Lots 1-21, Same premiums as in Class 1

Class 6 - Jersey

Lots 1-21, Same premiums as in Class 1

Class 7 – Milking Shorthorn

Lots 1-21, Same premiums as in Class 1

**SUPREME CHAMPION
OVER ALL BREEDS - ROSETTE**

**DIVISION G
GOATS**

**Superintendent - Ryan Sand
320-293-2724**

Entry Fee: \$3 Per Lot In Advance Only

1st Prize \$8 • 2nd Prize \$7 • 3rd Prize \$5

Class 1 - Registered Grade Goats

Lot

1. Junior Kid *(up to 4 months of age)*
2. Senior Kid *(4 months of age)*
3. Does never before in milk
(12-24 months)
4. Milking does *(12-24 months)*
5. Milking does *(2 years)*
6. Milking does *(3-4 years)*
7. Milking does *(5 years & older)*

Class 2 - Meat Goats

(Born between Dec. 1, 2025 - April 30, 2026)

Lot

1. Market Goat Wether
2. Market Goat Doe
3. Dairy Market Wether

Class 3 - Meat Breeding

Does Only

Lot

1. Junior Meat Breeding Doe Kid
(Mar. 1, 2026-May 31, 2026)
2. Senior Meat Breeding Doe Kid
(Dec. 1, 2025 - Feb. 28, 2026)
3. Fall Yearling Meat Breeding Doe - Never Kided
(June 1, 2025-Nov. 30, 2025)
4. Junior Yearling Meat Breeding Doe - Never Kided
(Mar. 1, 2025-May 31, 2025)
5. Senior Yearling Meat Breeding Doe - Never Kided
(Dec. 1, 2024-Feb. 28, 2025)

Continued on next page



DIVISION FS SHEEP

Superintendent - Ryan Sand
320-293-2724

**Entry Fee: \$3 Per Lot
In Advance Only**

Those desiring to enter Division FS should have met entrance requirements. Exhibitors to show not over two entries in single lots.

1st Prize \$8 • 2nd Prize \$7
3rd Prize \$5

Class 1 - Black Face Lot

1. Ewe Lamb
(Born after Jan. 1 of current year)
2. Fall Ewe Lamb
(Born between Sept. 1 – Dec. 31 of previous year)
3. Yearling Ewe
(Over 1 yr. and under 2 yrs. of age & not showing evidence of 4 permanent incisors)
4. Wether Dam Ewe Lamb
(Born after Jan. 1 of current year)
5. Wether Dam Yearling Ewe
(Over 1 yr. and under 2 yrs. of age & not showing evidence of 4 permanent incisors)
6. Market Lamb Ewe or Wether
(Born after Jan. 1 of current year)

Class 2 - White/Speckle Face
Same premiums as in Class 1

Class 3 Hair Breed
Same premiums as in Class 1

DIVISION R RABBITS

Superintendent
Karyn Warnert • St. Joseph
320-761-0170

No exhibitor shall be allowed to make more than one entry in any one lot. \$0.50 per lot will be charged in Division R

**Animal Check-in 2-3 p.m.
on Entry Day**

Exhibitors may exhibit 5 pens of rabbits; however, only one per lot. All rabbits must pass physical inspection or it may be eliminated from the show. The show will be open to everyone.

1. Single Fryer-purebred or crossbred, 3-5 lbs., not over 70 days old.
2. Pen of Three - 3 purebred. All the same breed and variety, not over 70 days old, weighing 3-5 lbs.

1st Prize \$4 • 2nd Prize \$3
3rd Prize \$2

BREEDING CLASSES

Class 1 - Californians Purebred Lot

1. Senior buck
(over 8 months)
2. Senior doe
(over 8 months)
3. Intermediate buck
(6-8 months)
4. Intermediate doe
(6-8 months)
5. Junior buck
(under 6 months)
6. Junior doe
(under 6 months)

7. Pre-Junior buck
(3 - 6 months)
8. Pre-Junior doe
(3 - 6 months)

Class 2 - New Zealand Purebred
Same as Class 1

Class 3 - Satin Purebred Lot

1. Senior buck
(over 8 months)
2. Senior doe
(over 8 months)
3. Intermediate buck
(6-8 months)
4. Intermediate doe
(6-8 months)
5. Junior buck
(under 6 months)
6. Junior doe
(under 6 months)

**Class 5 - Other Purebred
Large Breed** (Beveren, Champagne D'Argent, Checkered Giant, American Chinchilla, Giant Chinchilla, Cinnamon, Creme D'Argent, Flemish Giant, French Lop, Blanc d' Hotot, English Lop, Palomino, Silver Fox)
Same as Class 3

Class 6 - Mini Rex Purebred Lot

1. Senior buck (over 6 months)
2. Senior doe (over 6 months)
3. Junior buck (under 6 months)
4. Junior doe (under 6 months)

Class 8 - Mini Lop, Purebred
(Same as Class 6)

Class 11 - Havana Purebred
(Same as Class 6)

**Class 14 - Mini Satin
Purebred**
(Same as Class 6)

**Class 15 - Other Purebred
Small Breed** (Dutch, Florida White, Holland Lop, Jersey Wooly, Netherland Dwarf, Polish, Rex, American Fuzzy Lop, American Sable, Dwarf Hotot, English Angora, French Angora, Satin Angora, Belgian Hare, Britannia Petite, Standard Chinchilla, English Spot, Harlequin, Himalayan, Lionhead, Rhinelander, Silver, Silver Martin, Thrinata, Tan)
(Same as Class 6)

Class 16 - Fryers
Lot

1. Single Fryer
2. Pen of Three

*Have fun
at the fair!*





DIVISION P POULTRY

Superintendent - Thomas Schmitz
Albany • 320-845-6037
tdagsp533@albanytel.com

Entry must be in place by 8:30 a.m. Thursday. Be sure to read section on poultry. **ABSOLUTELY NO CHANGING OF ENTRIES AFTER ENTRIES ARE RECEIVED.** Superintendent will be responsible for caring for all poultry not owned by 4-H exhibitors. Regulations- all poultry exhibits shall be free from parasites and/or infectious diseases. If any birds are found showing symptoms of any such disease, the superintendent will remove such birds from the fair. Birds entered as single exhibits cannot also compete in trios. The following premiums will be paid to exhibitors on all standard bred poultry. May exhibit one entry per lot. An entry fee of \$0.50 per lot will be charged for all entries in Division P.

Entry form is due July 21.

Note: All birds must be pure bred (no sex-linked or hybrids) and will be judged according to the American Standard of Perfection. Fowl will be disqualified if they do not meet the standards. Judge's decision will be final. Birds must be hatched prior to May 1st.

CLASSES

Single birds - Standard or Bantam Chickens - Cock;

Cockerel; Hen; Pullet
Waterfowl - Old Drake (or Gander); Young Drake (or Gander); Old Duck (or Goose); Young Duck (or Goose)
Turkeys - Tom; Hen
Trios - All species, except pigeons

Single Bird Prizes

1st Prize \$5 • 2nd Prize \$4 • 3rd Prize \$2

Trio Prizes

1st Prize \$10 • 2nd Prize \$7 • 3rd Prize \$5

Class 1 - Standard Chickens

Lot

1. Cock
(male chicken over one year of age)
2. Cockerel
(male chicken under one year of age)
3. Hen
(female chicken over one year of age)
4. Pullet
(female chicken under one year of age)
5. Trio (A male and two females of the same age, breed, and variety)

Class 2 - Bantam Chickens

Lot

1. Cock
(male chicken over one year of age)
2. Cockerel
(male chicken under one year of age)
3. Hen
(female chicken over one year of age)
4. Pullet
(female chicken under one year of age)
5. Trio (A male and two females of the same age, breed, and variety)

Class 3 - Turkeys

Lot

1. Tom (Male turkey)
2. Hen (Female turkey)
3. Trio (A male and two females of the same age, breed, and variety)

Class 4 - Ducks

Lot

1. Old Drake
(male duck over one year of age)

2. Young Drake
(male duck under one year of age)
3. Old Duck
(female duck over one year of age)
4. Young Duck
(female duck under one year of age)
5. Trio Ducks

Class 5 - Bantam Ducks

Lot

1. Old Drake
(male duck over one year of age)
2. Young Drake
(male duck under one year of age)
3. Old Duck
(female duck over one year of age)
4. Young Duck
(female duck under one year of age)
5. Trio Ducks

Class 6 - Geese

Lot

1. Old Gander
(male duck over one year of age)
2. Young Gander
(male duck under one year of age)
3. Old Goose
(female duck over one year of age)

4. Young Goose
(female duck under one year of age)
5. Trio Geese

Class 7 - Poultry

Lot

1. Overall Champion Poultry Pen
2. Reserve Champion Poultry Pen

Class 8 - Pigeons

1st Prize \$3 • 2nd Prize \$2 • 3rd Prize \$1

Class 9 - Utility Bird

(Giant Homer, Careaux, Hungarians, Show Kings, Runts)

Lot

1. Cock-male pigeon
2. Hen- female pigeon

Class 10 - Sporting Bird

(Rollers, Tipplers, Flights, Racing Homers)

Lot

1. Cock-male pigeon
2. Hen- female pigeon

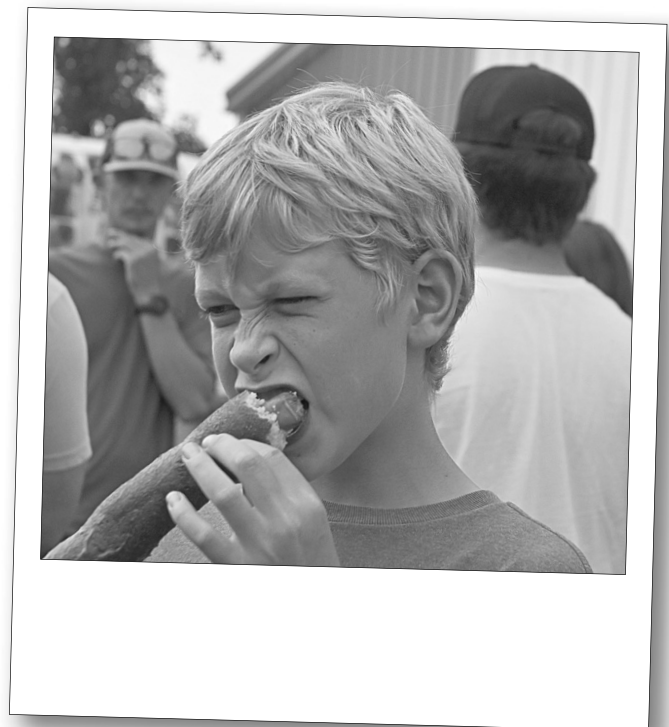
Class 11 - Fancy Bird

(Carriers, Dragoons, Pouters, Modenas, Frills, rare varieties)

Lot

1. Cock-male pigeon
2. Hen- female pigeon

Continued on next page



DIVISION H HORTICULTURE

Superintendent - Evelyn Budde
320-248-5902

Our Horticulture Superintendent will be there to answer questions about gardens, lawns, trees or flowers. All entries must be in their place on the fairgrounds no later than 11 a.m., Thursday. No exhibit shall be removed before 5 p.m. on Sunday. Pre-registration required. No entry fee. All grain and grass seed must comply with germination tests.

CLASS 39

1st Prize \$4 • 2nd Prize \$3 • 3rd Prize \$2

Corn

Lot

1. Hybrid corn (90 day & under, 10 ears)
2. Hybrid corn (95 day & over, 10 ears)
3. Corn - any other (10 ears)
4. Shelled corn (1 quart)

Grains & Grass Seed - 1 Qt. Samples

Lot

5. Alfalfa
6. Barley
7. Buckwheat
8. Clover, alsike
9. Clover, red
10. Flax
11. Oats
12. Rye
13. Sorghum
14. Soybeans
15. Tetrical
16. Wheat
17. Best collection of 3 grains

Fruits

Lot

18. Apple, Beacon (5 specimens)
19. Apple, Fireside (5 specimens)
20. Apple, Haralson (5 specimens)
21. Apple, Honeycrisp (5 specimens)
22. Apple, Prairie Spy (5 specimens)
23. Apple, any other variety not listed (5 specimens)
24. Cherries, any variety (1/2 pint)
25. Crabapple, Chestnut (10 specimens)
26. Crabapple, Dolgo (10 specimens)
27. Crabapple, Whitney (10 specimens)
28. Crabapple, any other variety not listed (10 specimens)
29. Gooseberry, any variety (1/2 pint)
30. Grapes, any variety (4 bunches)
31. Plums, Underwood (10 specimens)
32. Plums, Superior (10 specimens)
33. Plums, Toka (10 specimens)
34. Plums, any variety not listed (10 specimens)
35. Strawberries, any variety (1/2 pint)

36. Raspberries, any variety (1/2 pint)
37. Any other fruit not listed (5 specimens)
38. Collection of 5 or more varieties of apples (labeled)
39. Collection of 5 or more varieties of crab apples (labeled)
40. Collection of 5 or more varieties of plums (labeled)
41. Collection of 5 or more varieties of grapes (labeled)

Vegetables

Lot

42. Bean - green string in the pod (12 pods)
43. Bean - Lima in the pod (12 pods)
44. Bean yellow wax in the pod (12 pods)
45. Beet (6 specimens)
46. Broccoli (1 bunch)
47. Cabbage - flat (1 head)
48. Cabbage - pointed (1 head)
49. Cabbage - red (1 head)
50. Cabbage - round (1 head)
51. Carrot (6 specimens)
52. Cauliflower (1 head)
53. Celery (1 bunch)
54. Corn - ornamental (6 ears)
55. Corn - pop any variety (6 ears)
56. Corn - sweet (6 ears, in the husk)
57. Cucumbers- pickling (12 specimens)
58. Cucumbers - slicing (6 specimens)
59. Dill (4 heads)
60. Eggplant (1 specimen)
61. Endive (3 specimens)
62. Garlic (3 bulbs)
63. Gourd - mixed (6 specimens)
64. Herbs, potted
65. Herbs, cut (in water)
66. Kohlrabi (3 specimens)
67. Muskmelon (1 specimen)
68. Onion - red (3 specimens, unpeeled)
69. Onion - white (3 specimens, unpeeled)
70. Onion - yellow (3 specimens unpeeled)
71. Parsnips (6 specimens)
72. Peas - green in the pod (12 pods)
73. Peas - sugar snap (12 pods)
74. Peppers - hot (12 specimens)
75. Peppers - sweet bell (3 specimens)
76. Peppers - sweet banana (3 specimens)
77. Potatoes - red (6 specimens)
78. Potatoes - russet (6 specimens)
79. Potatoes - white (6 specimens)
80. Pumpkin (1 specimen)
81. Radish - globe (6 specimens)
82. Radish - icicle (6 specimens)
83. Rhubarb (6 stalks)
84. Rutabaga (3 specimens)
85. Squash - acorn (1 specimen)
86. Squash - buttercup (1 specimen)
87. Squash - butternut (1 specimen)
88. Squash - any other (1 specimen)
89. Zucchini (1 specimen)
90. Summer Squash, any other (1 specimen)
91. Swiss Chard (roots removed, 1 plant)
92. Tomatoes - cherry (12 specimens)
93. Tomatoes - red (4 specimens)
94. Tomatoes - yellow (4 specimens)
95. Turnip (4 specimens)
96. Watermelon (1 specimen)
97. Vegetables, any other not listed
98. Collection of 6 different kinds (labeled by variety)



Continued on next page

Largest Vegetable - 1 place given Lot

- 99. Largest cabbage *(by weight)*
- 100. Largest kohlrabi *(by weight)*
- 101. Largest onion *(by weight)*
- 102. Largest pepper *(by weight)*
- 103. Largest potato *(by weight)*
- 104. Largest pumpkin *(by weight)*
- 105. Largest summer squash *(by weight)*
- 106. Largest winter squash *(by weight)*
- 107. Largest tomato *(by weight)*
- 108. Largest cucumber *(by weight)*
- 109. Largest muskmelon *(by weight)*
- 110. Largest watermelon *(by weight)*

**DIVISION F
PLANTS & FLOWERS**

RULES & REGULATIONS

- 1. All flowers must be in place by 11 a.m. on Thursday. Pre-registration required.
- 2. All plants and flowers must be grown by exhibitor for at least six weeks prior to showing. Plants should be LABELED.
- 3. "Best Display" refers first to Quality, second to Quantity.
- 4. Commercial exhibits will not be allowed to compete for premiums.
- 5. All exhibits will be judged on quality and judge may withhold award if entries are not worthy.
- 6. No single entry may be exhibited under more than one class.
- 7. Containers to be furnished by exhibitor
- 8. Judge's decision is final.
- 9. *Read your schedule well. Take care to enter exhibits in the proper class. A specimen will be disqualified if it has more or less stems, sprays, stalks, blooms, etc. than the spike or stalk in its natural growing form, unless indicated on the schedule. A bud showing color is classified as a flower.

*Specimens should be clean, free of insect damage and with an attractive amount of foliage left attached. Remove all foliage above the waterline
*Please put variety or flower name on the tag. Visitors all like to know the names of flowers exhibited.

- 10. Any type of basket or vase may be used for arrangements.
- 11. All exhibits must remain on display until 6 p.m. on Sunday.

CLASS 40

1st Prize \$4 • 2nd Prize \$3 • 3rd Prize \$2

Potted Plants - Flowering

Plants must be in bloom

Lot

- 1. African Violet, double
- 2. African Violet, single
- 3. African Violet, variegated foliage
- 4. African Violet, miniature
- 5. African violet, any other
- 6. Begonia, tuberous
- 7. Begonia, tuberous hanging
- 8. Begonia, wax double
- 9. Begonia, wax single
- 10. Fuchsia
- 11. Geranium
- 12. Geranium, Ivy
- 13. Geranium, any other
- 14. Gloxinia
- 15. Hibiscus
- 16. Impatiens, double
- 17. Impatiens, single
- 18. Impatiens, New Guinea
- 19. Oxalis, red
- 20. Oxalis, green
- 21. Outdoor planter *(mixed flowers)*
- 22. Tahitian Bridal Veil
- 23. Any other potted plant not listed
- 24. Best hanging basket

Potted Plants - Non-Flowering

Lot

- 25. Aloe
- 26. Cactus

- 27. Cacti, best display of 5 or more varieties
- 28. Coleus - no blooms desired
- 29. Fern
- 30. Ivy
- 31. Indoor Vine
- 32. Lamium
- 33. Philodendron
- 34. Pothos
- 35. Succulent
- 36. Sanseveria
- 37. Wandering Jew
- 38. Any other potted plant not listed

Ornamental Vegetables

Must be in an outdoor patio container

Lot

- 39. Any ornamental vegetable

Cut Flowers

Lot

- 40. Ageratum
- 41. Amaranth
- 42. Aster, single *(3 blooms)*
- 43. Aster, double *(3 blooms)*
- 44. Astilbe *(2 sprays)*
- 45. Baby's Breath *(1 spray)*

Continued on next page



ECKER FEED SERVICE
Grinding & Mixing • Farm Supplies • Health Products

Quality Feeds for Quality Animals for Over 65 Years!

BIG GAIN

250 Main St., New Munich, MN 56356
320-837-5249

FELLING PARTS
Your Factory Direct Trailer Parts Outlet

No matter your trailer brand.
No matter your parts or service needs.
We'll get you & your trailer on the road again.

- Trailer Parts Sales
- Trailer Refurb/Restoration
- Trailer Repair & Service
- Towing Accessories & More

Service Hours: M-Th 7:00 am - 4:00 pm • Parts Sales Hours: M-F 7:30 am - 4:30 pm

FELLING PARTS & SERVICE • 1-866-335-5464
W: www.store.felling.com • E: parts@felling.com • 1525 Main St S • Sauk Centre, MN

1. Bachelor Button (3 blooms)
2. Balloon flower (1 stem)
3. Balsam (1 spike)
4. Bells of Ireland (3 stems)
5. Calendula (3 stems)
6. Canterbury bells (1 spike)
7. Carnation (3 stems, one color)
8. Celosia - crested (3 stems)
9. Celosia - plumed (3 stems)
10. Centaurea - golden globe (3 stems)
11. Chrysanthemum (3 stems)
12. Cleome (3 stems)
13. Coneflower (3 stems)
14. Coreopsis (3 stems)
15. Cosmos (3 blooms)
16. Dahlia - miniature (4" and under, 3 blooms)
17. Dahlia - medium (6-8", 1 bloom)
18. Dahlia - large (8-10", 1 bloom)
19. Dahlia - giant (over 10", 1 bloom)
20. Dahlia - pompom (3 blooms)
21. Dahlia - cactus (3 blooms)
22. Dahlia - decorative (3 blooms)
23. Daisy - gloriosa (Rudbeckia) (over 3", 3 blooms)
24. Daisy - gloriosa (under 3", 6 blooms - dwarf, 6 blooms)
25. Daisy - Shasta (6 blooms)
26. Daisy - Crazy (6 blooms)
27. Delphinium (1 spike)
28. Dianthus or pinks (5 stems)
29. Forget-me-not (6 blooms)
30. Foxglove (1 spike)
31. Gaillardia (3 blooms)
32. Gladiolus collection (6 blooms)
33. Gladiolus (single spike)
 - A. Bicolor F. Salmon
 - B. Blue - Lavender G. Smokey
 - C. Pink H. White
 - D. Purple I. Green
 - E. Red J. Yellow
34. Gomphrena (globe amaranth, 3 stems)
35. Heliopsis (false sunflower, 1 stem)
36. Hemerocallis (daylily, 1 stem)
37. Hollyhock (3 spikes)
38. Hosta - small (under 4" in diameter, 3 leaves)
39. Hosta - large (over 4" in diameter, 1 leaf)
40. Hosta blossoms (3 stems)
41. Hydrangea - arborescens (Annabelle type, 3 stems)
42. Hydrangea - paniculata (3 stems, includes P.G. variety)
43. Hydrangea - Endless Summer (3 stems)
44. Hydrangea, any other (1 stem)
45. Larkspur (3 stems)
46. Lavatera (1 spray)
47. Lily - up facing (1 stem)
48. Lily - out-facing (1 stem)
49. Lily - down-facing (1 stem)
50. Lily - calla (1 stem)
51. Lily - any other (1 stem)
52. Lobelia (3 stems)
53. Lisianthus (1 stem)
54. Marigold - small (3 blooms)
55. Marigold - medium (3 blooms)
56. Marigold - large (3 blooms)
57. Monarda (3 blooms)
58. Nasturtium (3 blooms)
59. Nicotiana (1 stem)
60. Pansy (3 blooms)
61. Petunia - single flowers (3 sprays the same color)
62. Petunia - double flowers (3 sprays the same color)
63. Petunia - giant fringed (3 sprays the same color)
64. Phlox - annual (3 stems)
65. Phlox - perennial (3 stems)
66. Pyrethrum (painted daisy, 5 stems)
67. Rose - hardy shrub (1 stem)
68. Rose - hybrid tea (1 bloom)
69. Rose - floribunda or polyantha (1 spray or 1 stem)
70. Rose - miniature (1 bloom)
71. Rose - any other not listed (1 stem)
72. Russian Sage (1 stem)
73. Salvia - red (3 stems)
74. Salvia - blue (3 stems)
75. Scabiosa (5 blooms)
76. Sedum - Autumn Joy (1 stem)
77. Sedum - any other variety (1 stem)
78. Snapdragon (3 stems)
79. Statice (3 stems)
80. Stock (1 spike-mattihola)
81. Strawflower (3 blooms)
82. Tithonia (Mexican sunflower, 1 stem)
83. Verbena (3 stems)
84. Veronica (3 spikes)
85. Viola (6 stems)
86. Yarrow (Achillea, 3 stem)
87. Zinnia - cactus flower (3 blooms)
88. Zinnia - dahlia flower (3 blooms)
89. Zinnia - pompom (3 blooms)
90. Any other cut flower not listed

Dried Materials

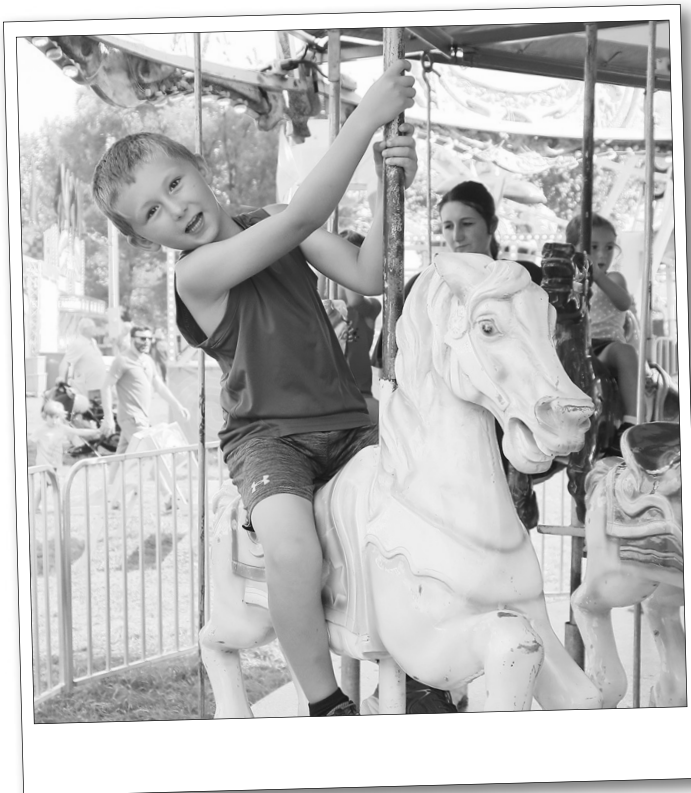
- Lot
91. Baby's Breath
 92. Bittersweet
 93. Cattails
 94. Milkweed pods
 95. Achillea (Yarrow)
 96. Any other dried materials

Artistic Arrangements

All fresh-flower arrangements must be home-garden-grown by exhibitor. Dried arrangements must contain all dried materials. May use non-home-grown materials. Only 1 entry per lot per lot exhibitor.

1st Prize \$5 • 2nd Prize \$4
3rd Prize \$3

- Lot
97. Arrangement in a tea cup
 98. Centerpiece (Table)
 99. Dried Arrangement (Table)
 100. Dried Arrangement (for wall)
 101. Garden Flowers
 102. Gladiolus (vase or basket)
 103. Holiday, Centerpiece (table)
 104. Holiday, Arrangement (for wall)
 105. Grass Arrangement
 106. Pine Cones
 107. Rose, vase or basket
 108. Fairy Garden



**DIVISION J
HOME ACTIVITIES**
Superintendent –Joyce Schoen
320-352-6122

**OPEN TO ALL AGES
NO ENTRY FEE**
Pre-registration required

GENERAL RULES: All entries must be in their place on the fairgrounds no later than 11 a.m. Thursday. No exhibits shall be removed before 5 p.m. on Sunday.

Articles in this department that were previously entered will not be allowed to compete again this year. All articles in this department must be made by the exhibitor after the date of the previous Stearns County Fair. **ABSOLUTELY** no soiled articles will be received by this department for entry or exhibit.

All needle art pictures, bell pulls, wall hangings and other items intended as wall or hanging decorations shall be furnished appropriately and ready to be hung for display.

CLASS A

1st Prize \$4 • 2nd Prize \$3
3rd Prize \$2

JUDGING CRITERIA FOR FOODS:

All Canned Goods, Pickles, Dried Herbs, Jams, Preserves, Jellies And Other Items In This Class (A) Shall Be Presented In Half Pint Or Pint Canning Jars.

Appearance - 25% (clean jars, new rings, etc.)
Lightness - 10%

Tenderness - 10%
Texture - 10%
Moisture Content - 10%
Flavor and Odor - 35%

Canned Vegetables

- Lot
1. Beans – green, string
 2. Yellow Wax Beans
 3. Beets
 4. Cauliflower
 5. Carrots - small, whole
 6. Carrots - sliced
 7. Corn
 8. Greens - any kind
 9. Peas
 10. Tomatoes - whole
 11. Tomato Soup
 12. Vegetables - mixed for soup
 13. Kraut
 14. Pumpkin - for pie
 15. Any other

Canned Fruits

- Lot
16. Apples - for sauce
 17. Apples - crab
 18. Apricots
 19. Blackberries
 20. Blueberries
 21. Cherries
 22. Fruits - mixed for salad
 23. Ground Cherries
 24. Gooseberries
 25. Peaches
 26. Pears
 27. Plums
 28. Raspberries – black
 29. Raspberries - red
 30. Rhubarb - for sauce
 31. Strawberries
 32. Any other

Canned Meats

- Lot
33. Beef
 34. Chicken

35. Fish
36. Meatballs
37. Mince Meat
38. Pork
39. Sausage Links
40. Wild Game
41. Any other

Jams And Preserves

- Lot
42. Apple
 43. Apple Butter
 44. Apricot
 45. Blueberries
 46. Carrot
 47. Fruit Mixed
 48. Ground Cherry
 49. Gooseberry
 50. Grape
 51. Peach
 52. Plum
 53. Plum Butter
 54. Raspberry
 55. Rhubarb
 56. Strawberry
 57. Zucchini Jam
 58. Any other

The accepted way to preserve jams & jellies is the "2 lid method" (no wax)

Jellies

- Lot
59. Apple
 60. Apple-crab
 61. Blackberry
 62. Black Raspberry
 63. Chokecherry
 64. Cranberry
 65. Currant
 66. Gooseberry
 67. Grape
 68. Mint
 69. Plum
 70. Raspberry
 71. Strawberry
 72. Sweet Cherry
 73. Any other

Pickles

- Lot
74. Apple-crab, whole
 75. Bean
 76. Beet
 77. Bread and Butter
 78. Carrot
 79. Cucumber - sour, whole
 80. Cucumber - sweet, chunk
 81. Cucumber - sweet, whole
 82. Dill
 83. Onion
 84. Watermelon
 85. Zucchini
 86. Mixed Vegetables
 87. Eggs
 88. Any Other

Relishes

- Lot
89. Beet
 90. Corn
 91. Chili Sauce
 92. Spaghetti Sauce
 93. Cucumber
 94. Piccalilli
 95. Watermelon
 96. Picante Sauce
 97. Salsa
 98. Ketchup
 99. Tomato Juice
 - 100.V8 Juice
 - 101.Any other

Dried Fruits - 1/2 to 1 pint

- Lot
- 102.Apples
 - 103.Apricots
 - 104.Bananas
 - 105.Pears
 - 106.Pineapple
 - 107.Any other

Continued on page 42

**HAVE FUN
AT THE**

Fair!

JULY 29 – AUGUST 2





BILLMARK'S INSURANCE SERVICES LLC

**HAVE YOUR RATES GONE UP?
Call us for a review & quote today!**



*For all
your
insurance
needs.*



512 Main Street S., Ste. 2
Sauk Centre, MN 56378

www.saukcentreinsurance-billmarks.com

Hours: Monday-Friday 8am-4:30pm
Appointments available at anytime

Call us today ~ 320.351.2436



NEW MUNICH MUTUAL INSURANCE

Billmark's Insurance Services, LLC

512 Main St. S.
Sauk Centre, MN 56378
(320) 351-2436
saukcentreinsurance-billmarks.com

Billmark's Lakes Area Insurance, Inc.

913 Broadway St.
Alexandria, MN 56308
(320) 763-9022
billmarks.com

Center Insurance Agency

301 N. Ramsey Ave.
Litchfield, MN 55355
(320) 693-3255

MidCountry Insurance

423 Main St. S.
Sauk Centre, MN 56378
320-352-7200
midcountryinsurance.com

North Risk Partners

411 W. Main St. E.
Melrose, MN 56352
(320) 256-7741
northriskpartners.com

Ross Nesbit Agencies, Inc.

50 N. 5th St. or
P.O. Box 200
Greenwald, MN 56335
(320) 987-3223
greenwaldinsurance.com



Left to right: Michael Zierden, Victor Uphoff, Tim Mayers, Darcy Pfeffer, Theresa Petermeier, Stephen Wiechman, Dave Ehler, and Dan Schulzetenberg.



Sauk Centre, MN

RITTER Trucking LLC

**STRAW
FOR
SALE!**

**CUSTOM TRUCKING
320-249-1049**

**GROUND LOADER CATTLE POT
& FLAT BED**



**I haul into our
season Specials!**

BEAR TRACK
ALUMINUM TRAILERS

TOUGH YOU CAN DEPEND ON.

Bear Track Aluminum Trailers™ are built from a tough you've never seen before. Manufactured to the highest standards, Bear Track trailers are engineered to withstand the harshest environments and toughest loads!

ROADWAY SPORT-N-TRAILER

9-17th Ave SE, St Joseph, MN 56374 | 320-363-8430 | roadwaysport-n-trailer.com

Blue Door Mini Storage

Storage Units & Cargo Containers Available!

Call today for your space!

320-351-4584
BLUEDOORMINISTORAGE.COM





Jerry's Pumping LLC
Villard MN

References Available!

- Custom Liquid Manure Application
- Specializing in Large Operations
- Multiple Systems
- 12" hoses

JERRY LOXTERCAMP OWNER/OPERATOR
Quality and Efficiency is our Goal...to Save You Time and \$\$\$

48713 State Hwy. 28
Villard, MN 56385

320-298-0036



sauk rapids 320.252.2110 & sauk centre 320.352.5753

DOOLEY'S

PETROLEUM, INC.

Serving MN ag families for over 60 years.

DIESEL-PROPANE-GASOLINE



NOW DOING BIDS FOR SUMMER PROJECTS

- Thermotech Windows
- Edco Steel Windows
- Fabral Steel



EDCO **FABRAL** METAL WALL AND ROOF SYSTEMS **ThermoTech** Precision Windows and Doors

ELROSA LUMBER CO. EST. 1956

CONTACT ELROSA LUMBER COMPANY FOR DRAFTING AND ALL YOUR BUILDING NEEDS...

P.O. Box 140 • Elrosa, MN
320-697-5591

EAGLE'S HEALING NEST
HEALING WITH HONOR

Check us out Online!



JOIN US FOR OUR 13TH ANNUAL *nest fest*

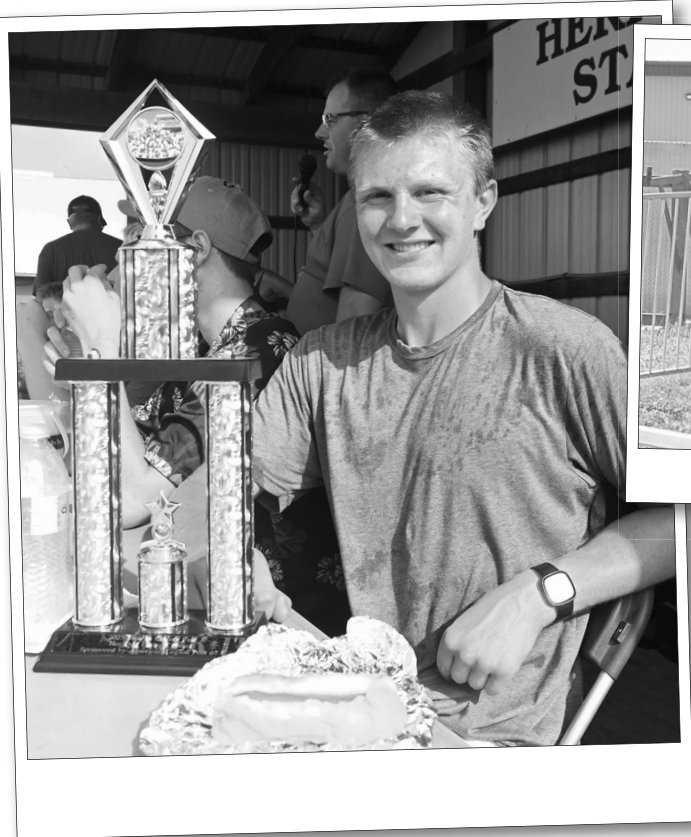
Free Admission | Food | Music | Vendors
Nest Tours | Silent Auction

SATURDAY, AUGUST 29, 2026 | 10 AM - 5 PM
310 N HWY 71, SAUK CENTRE, MN

2026 Events | Save the Date!

Saturday, June 27 Panda Project Saturday, October 24 Harvest Festival

For updates:
eagleshealingnest.org | 320-351-6200
veteranservices@eagleshealingnest.org



DIVISION J BAKING

All baking should be plastic bagged, displayed on a 7" plate - paper, plastic, or styrofoam with the entry tag on the outside of the plastic bag.

CLASS B

1st Prize \$4 • 2nd Prize \$3
3rd Prize \$2

Yeast Baking - 1/4 loaf Lot

1. White Bread
2. Whole Wheat Bread
3. Graham Bread
4. Oatmeal Bread
5. Cinnamon Bread

Yeast Rolls - 3 rolls Lot

6. Rye Bread
7. Christmas Bread
8. Raisin Bread
9. Any other
10. Buns - plain
11. Hot Cross Buns
12. Caramel Rolls
13. Cinnamon Rolls
14. Coffee Cake
15. Dinner Rolls
16. Cloverleaf Rolls
17. Any other

Quick Breads - 1/4 loaf Lot

18. Banana
19. Apricot
20. Carrot
21. Corn
22. Cranberry
23. Lemon
24. Nut
25. Date

26. Orange
27. Plain Coffee Cake
28. Prune
29. Pumpkin
30. Raisin
31. Rhubarb
32. Gingerbread
33. Zucchini
34. Any other

Muffins - Display of 3 Lot

35. Plain
36. Pumpkin
37. Blueberry
38. Bran
39. Oat Bran
40. Oatmeal
41. Baking Powder Biscuits
42. Any other

Cakes - No Commercial Mixes Accepted NO ICING - one 4" square Lot

43. Angel Food
44. Jelly Roll
45. Delicate or Plain White
46. Chiffon
47. Devils Food
48. Spice
49. Fruit - Holiday Variety
50. Applesauce
51. Carrot
52. Rhubarb
53. Fresh Apple
54. Raisin
55. Pound
56. Bundt
57. Poppy Seed
58. Zucchini
59. Cupcakes - dark
(not iced, 3)
60. Cupcakes - light
(not iced, 3)

Continued on next page

Fruit Leather - 3" square

- Lot
108. Apple
 109. Apricot
 110. Grape
 111. Pear
 112. Strawberry
 113. Tomato
 114. Any other

Dried Vegetables - 1/2 to 1 pint

- Lot
115. Carrots
 116. Beans - Lima, String, Wax, Pole
 117. Beans - Dried, Legume, Lentils
 118. Peas
 119. Onions
 120. Tomato
 121. Any other

Dried Herbs - 1/2 to 1 pint

- Lot
122. Mint
 123. Chives
 124. Rosemary
 125. Thyme
 126. Oregano
 127. Basil
 128. Dill Seed
 129. Parsley
 130. Cilantro
 131. Sage
 132. Any other

Homemade Wine

All entries must be homemade by amateur wine makers only. Wines must be bottled in .750 oz. bottles, minimum size. All bottles must be securely corked or capped. Each bottle must be clearly labeled with description of contents.

Grape

- Lot
133. Dry Red
 134. Sweet Red
 135. Sweet White

Fruit (Wild)

- Lot
136. Dry
 137. Sweet

Fruit (Other)

- Lot
138. Dry
 139. Sweet

Vegetable

- Lot
140. Dry
 141. Sweet

Other

- Lot
142. Dry
 143. Sweet



- 61. Cupcakes - light iced (3)
- 62. Cupcakes - dark iced (3)
- 63. Dark Layer Cake - any frosting
- 64. Light Layer Cake - any frosting
- 65. Best Decorated Cake
- 66. Best Decorated Non-Cake
- 67. Any other

Baking Typical Of Foreign Countries – Display of 3

- Lot
- 68. Rosettes
 - 69. Fattigman
 - 70. Kolachi
 - 71. Poppy Seed Rolls
 - 72. Strudel
 - 73. Doughnuts- raised
 - 74. Doughnuts-cake
 - 75. Bismarks
 - 76. Long Johns
 - 77. Apple Dumplings
 - 78. Any other

Cookies - Display of 3 in plastic bag

- Lot
- 79. Plate of Decorated Cookies
 - 80. Light Rolled Flat
 - 81. Molasses - rolled flat
 - 82. Light Dropped - without fruit or nuts
 - 83. Light Dropped - with fruit or nuts
 - 84. Dark Drop - without fruit or nuts

- 85. Dark Drop - with fruit or nuts
- 86. Peanut Butter
- 87. Fruit Filled
- 88. Icebox
- 89. Chocolate Chip
- 90. Sally Lund - iced
- 91. Oatmeal
- 92. Date
- 93. Sugar Cookie
- 94. Any Other

Bars - Display of 3

- Lot
- 95. Apple
 - 96. Brownie
 - 97. Carrot
 - 98. Date
 - 99. Oatmeal
 - 100. Sour Cream Raisin
 - 101. Lemon
 - 102. Zucchini
 - 103. Any other

Pies - one slice pie to fit 7" plate. NO small individual pies.

- Lot
- 104. Apple
 - 105. Blueberry
 - 106. Cherry
 - 107. Lemon
 - 108. Mince Meat
 - 109. Peach
 - 110. Pecan
 - 111. Pumpkin or Squash
 - 112. Raisin

- 113. Rhubarb
- 114. Any other

Candies – 3 pieces on 7" plate

- Lot
- 115. Divinity
 - 116. Caramel
 - 117. Chocolate Fudge
 - 118. Mints
 - 119. Peanut Brittle
 - 120. Molded Candy - plain
 - 121. Molded Candy - filled
 - 122. Decorated Candy
 - 123. Any other

Miscellaneous

- Lot
- 124. Eggs - white (3)
 - 125. Eggs - brown (3)
 - 126. Eggs - any color (3)
 - 127. Noodles - dried
 - 128. Lard (1 pint)
 - 129. Honey - extracted (1 pint)
 - 130. Honey - comb
 - 131. Any other

Teen Bakers - Girl or Boy 12-17

- Lot
- 132. Bread (1/4 loaf)
 - 133. Quick Bread
 - 134. Banana Nut Bread
 - 135. Cake - Any kind, no icing
 - 136. Chocolate Chip Cookies (3)
 - 137. Peanut Butter Cookies (3)
 - 138. Oatmeal Cookies (3)
 - 139. Bars (3)

- 140. Muffins
- 141. Snacks (1 cup)
- 142. Popcorn Balls (2)
- 143. Caramel Corn (1 cup)
- 144. Bark Candy
- 145. No Bake Cookies
- 146. Any other


Junior Bakers - Girl or Boy Under 12

- Lot
- 147. Bread (1/4 loaf)
 - 148. Quick Bread
 - 149. Banana Nut Bread (1/4 loaf)
 - 150. Cake (4" square any kind, no icing)
 - 151. Chocolate Chip Cookies (3)
 - 152. Peanut Butter Cookies (3)
 - 153. Bars (Three 2" squares any kind, no icing)
 - 154. Muffins (3 any kind)
 - 155. Snacks (1 cup any kind, dry)
 - 156. Popcorn Balls (2)
 - 157. Caramel Corn (1 cup)
 - 158. Bark Candy
 - 159. No Bake Cookies
 - 160. Any Other

Continued on next page



FIEDLER FINISHING
 13209 100th Ave.
 Villard, MN
 320-352-3894

Freeport Screen Printing, Inc.

115 1st Ave. North
 Freeport, MN 56331-0352
 Phone: 320-836-2393
 fspi2@albanytel.com

• Cheryl Fuechtmann and Kim Bauer, owners •

VISIT THE FAIR &
 THEN COME CELEBRATE OUR
17TH ANNIVERSARY
 → AUGUST 1ST, 2026 ←

MUSIC BY:
Running 2 Fast
 8:30pm to 12:30am

320-351-9951
 Sinclair Lewis Ave, Sauk Centre



NEXT DOOR
BAR & LOUNGE
 Sauk Centre 351.9951



Feed Co.
 A Dealer for Famo Feeds & Kent Feeds

*Feed, Seed, Commodity Blending
 Pet Foods, Animal Health*

Paynesville • 320-243-3938 • Feedcomn.com

DIVISION J CRAFTS

PRE-TEEN ARTWORK

16 years or younger
 as of Jan. 1, 2025.

No Entry Fee.

Pre-registration required

Class PT 1 (Ages 3-8)

1st Prize \$4 • 2nd Prize \$3
 3rd Prize \$2

Lot

1. Beadwork
2. Bird feeder
3. Bird house
4. Bookbag/Purse
5. Candle
6. Candle holders
7. Ceramics (*greenware & fired*)
8. Christmas article
9. Clay (*not fired*)
10. Derby car
11. Doll
12. Doll clothes
13. Dream catcher
14. Embroidery
15. Fabric Painting
16. Fleece - Pillowcase
17. Fleece - any other item
18. Greeting cards
19. Jewelry - earrings
20. Jewelry - necklace
21. Jewelry - bracelet
22. Jewelry - pin
23. Latch hook
24. Leather craft
25. Lego (*up to 12" display*)
26. Mobiles
27. Model - Car
28. Model - Rocket
29. Model - Truck
30. Model - Tractor
31. Model - Boat
32. Model - Plane
33. Origami
34. Other holiday item

35. Picture - 3 dimensional art
36. Pillow
37. Printmaking
38. Potholder
39. Quilts
40. Rock painting
41. Sculpture
42. Sewn article
43. Stained glass
44. Stuffed toy
45. Tied fleece blanket
46. Tie dying
47. Toy - other than stuffed
48. Woodwork - any
49. Any Other

Class PT 2 (Ages 9-12)

Lots same as Class PT 1

Class PT 3 (Ages 13-16)

Lots same as Class PT 1

ADULT ARTWORK

17 years and older
 as of Jan. 1, 2025.

No Entry Fee

Pre-registration required

Class AW

1st Prize \$4 • 2nd Prize \$3
 3rd Prize \$2

Lot

1. Bead Work - Other than Holidays
2. Bead Work - Any Holiday
3. Artificial Flowers
4. Handmade Cards - Other than Holidays
5. Handmade Cards - Any Holiday
6. Computer Generated Greeting Cards (*set of 6*)
7. Computer Generated Stationary (*set of 6*)
8. Miscellaneous Computer Generated Art not listed in Division J Art
9. Curio - article of stone ware, bark, wood, etc.

Continued on next page



10. Plastic Canvas - Other than Holidays
11. Plastic Canvas - Any Holiday
12. Macramé
13. Quilling
14. Refrigerator Magnets
15. Wreaths - Other than Holidays
16. Wreaths -Any Holiday
17. Valentine Crafts - Any Not Listed
18. Easter Crafts - Any Not Listed
19. Thanksgiving Crafts - Any Not Listed
20. Christmas - Any Not Listed in Any Other Lot in Division J
21. Any Other Holiday Not Listed Above or Elsewhere in Division J
22. Craft Dolls
23. Any Other
24. Model Kits
25. Weaving
26. Book Bag/Purse
27. Fabric Painting
28. Stuffed Toy
29. Tie Dying
30. Flower Making
31. Jewelry
32. Candles
33. Soap (3 bars)
34. Mosaics – Seeds, Stone, etc.
35. Calligraphy
36. Etching
37. Decoupage
38. Rosemaling
39. Woven Basket
40. Pottery
41. Ceramics

42. Porcelain
43. Doll Clothes
44. Any Craft Using Recycled Materials Only
45. Metal Craft - Any

Hobby Craft

- Lot
46. Carvings - Non Metal, Non-Wood
 47. Any Other

Wall Hangings - Framed or Ready to Hang Unframed

- Lot
48. Machine Embroidery
 49. Hand Embroidery
 50. Appliqué
 51. Needlepoint
 52. Stencil
 53. Counted Cross Stitch - Picture
 54. Counted Cross Stitch - Any Other
 55. Latch Hook - Framed
 56. Latch Hook - Not Framed
 57. Hardanger
 58. Quilted
 59. Any Other

**DIVISION J
NEEDLECRAFT**

Pre-registration required

Class C

Must be made within the last year by person exhibiting. No soiled articles accepted.

1st Prize \$5 • 2nd Prize \$4
3rd Prize \$3

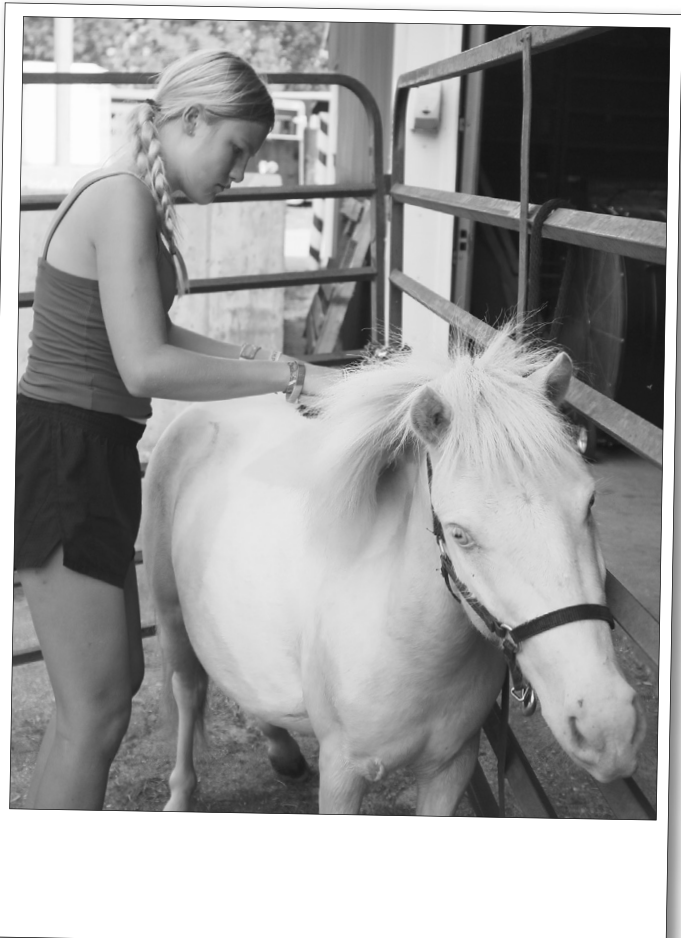


Table Linens

- Lot
1. Crocheted Tablecloth
 2. Crochet Trimmed Tablecloth
 3. Embroidered Tablecloth
 4. Cross Stitch Tablecloth
 5. Tablecloth - Any Other
 6. Placemat
 7. Cross Stitch (other than tablecloth or table runner)
 8. Appliqué
 9. Hardanger
 10. Cutwork
 11. Table runner - Quilted
 12. Table runner - Cross Stitch
 13. Table runner - Crocheted
 14. Table runner - Crochet Trimmed
 15. Table runner - Hardanger
 16. Table Runner - Any Other
 17. Any Other Table Linen

Pillows & Pillow Cases - 1 Pair

- Lot
18. Crochet Trimmed
 19. Appliqué Trimmed
 20. Cross Stitched
 21. Embroidered
 22. Painted

23. Quilted
24. Cutwork
25. Fleece
26. Hardanger
27. Any Other

Dish Towels & Similar - Only 2 Lot

28. Crocheted
29. Appliquéd
30. Cross Stitched
31. Embroidered
32. Painted
33. Dishcloth - knitted or crocheted
34. Tea Towel
35. Any Other

Miscellaneous

- Lot
36. Potholders (2)
 37. Chair Pad
 38. Sampler
 39. Pillow Sham
 40. Any other fleece item

Continued on next page

QUILTS

Entries in this category MUST be made solely by one person (exhibitor)

Grand Champion Quilt - \$16

1st Prize \$8 • 2nd Prize \$5
3rd Prize \$3

Hand Appliqued

Lot

- 41. Hand quilted
- 42. Machine quilted
- 43. Tied

Machine Appliqued

Lot

- 44. Hand quilted
- 45. Machine quilted
- 46. Tied

Hand Pieced

Lot

- 47. Hand quilted
- 48. Machine quilted
- 49. Tied

Machine Pieced

Lot

- 50. Hand quilted
- 51. Machine quilted
- 52. Tied

Cross Stitched

Lot

- 53. Hand quilted
- 54. Machine quilted
- 55. Tied

Embroidered

Lot

- 56. Hand quilted
- 57. Machine quilted
- 58. Tied

Combination Technique

Lot

- 59. Hand quilted
- 60. Machine quilted
- 61. Tied

Youth Or Crib Quilt

Lot

- 62. Appliqued
- 63. Pieced
- 64. Cross Stitched
- 65. Embroidered
- 66. Tied
- 67. Quillo
- 68. Machine quilted

Stamped Material (Cheater)

Lot

- 69. Hand quilted
- 70. Machine quilted
- 71. Tied

QUILTS - GROUP

Entries in this category will be pieced by exhibitor and quilted by another person. If the entry is made by several, i.e. church or club, please specify group. List name of quilt pattern.

Hand Appliqued

Lot

- 72. Hand quilted

Machine Appliqued

Lot

- 73. Hand quilted
- 74. Machine quilted

Hand Pieced

Lot

- 75. Hand quilted
- 76. Machine quilted

Machine Pieced

Lot

- 77. Hand quilted
- 78. Machine quilted

Cross Stitched

Lot

- 79. Hand quilted
- 80. Machine quilted

Embroidered

Lot

- 81. Hand quilted
- 82. Machine quilted

Combination Technique

Lot

- 83. Hand quilted
- 84. Machine quilted

Youth Or Crib Quilt

Lot

- 85. Appliqued
- 86. Pieced
- 87. Cross Stitched
- 88. Embroidered
- 89. Tied
- 90. Quillo
- 91. Machine Quilted

See you at the fair!
— July 29 - August 2

Stearns County American Dairy Association

Look for us in the Ice Cream Parlor in the Dairy Building next to the Grandstand!

Milk Shakes

Available
Every Day!



Also serving
Rootbeer Floats!
only the dairy best!



Enjoy nutritious
Dairy Products

SUPERIOR SEAMLESS GUTTERS, LLC.



Call today
for an
estimate!

5" AND 6" SEAMLESS
EXTERIOR REMODELING
WE DO SNOW REMOVAL!

GUTTER GUARDS &
SCREEN AVAILABLE

SKID LOADER
SERVICES

Cole Johnson

OWNER/LEAD INSTALLER

320-460-0205 « Osakis MN

THE TRAILER CENTER

• LONG PRAIRIE, MN •

Car, Deckover, Dump, Enclosed, Equipment,
Tilt, Utility Trailers & Accessories

THETRAILERCENTER.COM

22979 US Hwy. 71, Long Prairie, MN | 320-732-6161

SEED CORN, CERTIFIED SEED GRAINS, ALFALFA, AND OTHER GRASS SEEDS, CUSTOM CLEANING



Nietfeld Seed, Inc.
www.nietfeldseed.com
 34253 County Rd. 31, Melrose
320-987-3442
 Fax: 320-987-3700
 Dan, Jan and Employees

Call Worms Lumber & Ready Mix for your lumber & concrete needs.



WORMS
 Lumber & Ready Mix Inc.
When you need it, where you need it!



New Munich 320-837-5288 Sauk Centre 320-352-2841 Long Prairie 320-732-6452
www.wormsreadymix.com



We believe **THRIVING COMMUNITIES**
 start with financial confidence...
because communities grow

WHEN PEOPLE BELIEVE IN THEIR FUTURE.

SAUK CENTRE 320.352.5211 | LONG PRAIRIE 320.732.2133
www.mn-bank.bank

Additional parking will be available in our lot during the derbies Thurs., Fri. & Sat.
 Profits to support 4H & VFW groups

STEARNS COUNTY CORN GROWERS
 Promoting opportunities for Stearns County Corn Farmers.

Proud to support the Ag Industry!



MinnesotaCorn
 For more information go to mncorn.org

You'll Enjoy Our Fun Atmosphere!

24 Beers on Tap! Beer Towers!

Crazy J's
 BAR & GRILL



Daily Specials

CHECK OUR FACEBOOK PAGE

OPEN 7 DAYS A WEEK FROM 10AM - 2 AM! KITCHEN OPEN LATE.

520 Sinclair Lewis Ave. | Sauk Centre | 320-352-4343

Michelle FISCHBACH
 REPUBLICAN FOR CONGRESS

SERVING OUR COMMUNITY.
Fighting for western Minnesota.




FISCHBACHFORCONGRESS.COM

MichelleFischbachForCongress @FischbachMN7

PAID FOR BY FISCHBACH FOR CONGRESS

Afghans

- Lot
- 92. Crocheted
- 93. Knit
- 94. Broomstick or Hairpin Lace
- 95. Any Other

Rugs

1st Prize \$5 • 2nd Prize \$4
3rd Prize \$3

- Lot
- 96. Braided Wool
- 97. Braided Cotton
- 98. Hooked Wool – rag
- 99. Hooked Cotton
- 100. Hooked Wool Yarn
- 101. Woven Cotton
- 102. Woven Wool
- 103. Braided or Crocheted Plastic
- 104. Crocheted Cotton
- 105. Any Other

Christmas Stitchery

1st Prize \$3 • 2nd Prize \$2
3rd Prize \$1

- Lot
- 106. Stocking
- 107. Tree Skirt
- 108. Tree Decoration
- 109. Crewel Work

- 110. Crocheted Doily
- 111. Needlepoint
- 112. Dress Dolls
- 113. Sofa Pillow - completed
- 114. Any Other Not Listed Here or in Crafts

Doilies - Other than Christmas
Lot

- 115. Tatted Doily (any size)
- 116. Fine Thread Doily (under 12 inches)
- 117. Coarse Thread Doily (under 12 inches)
- 118. Fine Thread Doily (over 12 inches)
- 119. Coarse Thread Doily (over 12 inches)
- 120. Yarn Crocheted Doily (any size)
- 121. Any Other

Miscellaneous

- Lot
- 122. Counted Cross Stitch Pillow - Completed
- 123. Counted Cross Stitch Bell Pull
- 124. Latch Hook Padded Picture Frame
- 125. Any Other

Garment Making

(You must supply your own hangers)

Grand Champion - \$15
1st Prize \$7 • 2nd Prize \$4
3rd Prize \$2

Ladies Wear

- Lot
- 126. Cape
- 127. Coat
- 128. Jacket
- 129. Suit or Pantsuit - any material
- 130. Dress
- 131. Formal
- 132. Maternity Garment - any kind
- 133. Sweatshirt
- 134. Vest
- 135. Apron
- 136. Lingerie
- 137. Swimsuit
- 138. Snowsuit
- 139. Slacks
- 140. Skirt - any material
- 141. Blouse
- 142. Sweatshirt - plain
- 143. T-Shirt
- 144. Sweatshirt - decorated
- 145. Housecoat

- 146. Shorts
- 147. Pajamas
- 148. Nightgown
- 149. Jumpsuit
- 150. Jumper
- 151. Any Other

Mens Wear

- Lot
- 152. Pajamas
- 153. Shirt
- 154. Vest
- 155. Slacks
- 156. Suit
- 157. Jacket
- 158. Sportcoat
- 159. Any Other

Continued on next page



STEARNS COUNTY FAIR

VIP **\$100**
Parking

This parking permit will be awarded July 22, 2026 and you will be contacted. This permit will be good for the week of the 2026 Stearns County Fair. If you are not awarded a spot, your check will be returned. Original spots by Outdoor Arena. Additional spots available upon request by calling 320-352-5535
Payment must be completed with form. Spots are limited!
First come first serve!

NAME: _____

ADDRESS: _____

CITY: _____

CONTACT
PHONE NUMBER: _____

Mail (may not be dropped off) this form with payment to:

Jodie Deschene, 226 Minette Road, Sauk Centre, MN 56378

Infants And Children's Wear*Not Knitted or Crocheted Garments*

- Lot
- 160. Child's Coat
- 161. Dress
- 162. Party Dress - any material
- 163. Boys Trousers or Slacks
- 164. Girls or Boys Jacket
- 165. Boys or Girls Shirt
- 166. Blouse
- 167. Girls Slacks or Shorts
- 168. Girls Pants Outfit
- 169. Jumpsuit
- 170. Baptismal Gown
- 171. Bonnet
- 172. Infant Dress
- 173. T-Shirt
- 174. Snowmobile Suit
- 175. Swimsuit
- 176. Vest
- 177. Sweatsuit
- 178. Girls Slip

Infants And Children's*Knitted OR Crocheted Garments*

- Lot
- 179. Ensemble - 2 or more pieces, knitted
- 180. Ensemble - 2 or more pieces, crocheted
- 181. Jacket or sweater - knitted
- 182. Jacket or sweater - crocheted
- 183. Bib - crocheted
- 184. Bib - knitted
- 185. Bonnet - crocheted or knitted
- 186. Booties - crocheted or knitted

- 187. Child's Cap - crocheted or knitted
- 188. Mittens - knitted
- 189. Mittens - crocheted
- 190. Scarf - knitted or crocheted
- 191. Slippers - knitted or crocheted
- 192. Baptismal gown

Adult Knitted Or Crocheted Garments

- Lot
- 193. Men's Knitted Sweater
- 194. Ladies Knitted Sweater
- 195. Any Crocheted Sweater
- 196. Slippers - knitted
- 197. Slippers - crocheted
- 198. Knitted Scarf or Shawl
- 199. Crocheted Scarf or Shawl
- 200. Mittens-knitted
- 201. Mittens - crocheted
- 202. Cap - knitted
- 203. Cap - crocheted
- 204. Vest - crocheted or knitted
- 205. Any Other

Quilted Apparel/ Accessories

- Lot
- 206. Bag or Tote
- 207. Jacket
- 208. Jumper
- 209. Purse
- 210. Sweatshirt
- 211. Vest
- 212. Any Other

Fleece Apparel/ Accessories

- Lot
- 213. Blanket

- 214. Throw
- 215. Jacket
- 216. Mittens/Gloves
- 217. Hats
- 218. Booties
- 219. Vest
- 220. Scarf
- 221. Any Other

**DIVISION J
ARTWORK
OF THOSE 16 & OVER**

All works submitted must be work of exhibitor. All paintings are to be framed and ready for hanging. Drawings are to be framed or put on heavy backing suitable for display. Pre-registration required.

**Class D
Grand Overall \$15**

- 1st Prize \$5 • 2nd Prize \$4
- 3rd Prize \$3

**Oil
Lot**

- 1. Portrait
- 2. Figure
- 3. Landscape
- 4. Still Life
- 5. Seascape
- 6. Animals and Birds
- 7. Abstract
- 8. Any Other

Water Color And Pastels

- Lot
- 9. Portrait
- 10. Figure
- 11. Landscape
- 12. Still Life
- 13. Seascape
- 14. Animals and Birds
- 15. Abstract
- 16. Any Other

Drawings

- Lot
- 17. Portrait
- 18. Figure
- 19. Landscape
- 20. Still Life
- 21. Seascape
- 22. Animals and Birds
- 23. Abstract
- 24. Any Other

Multi Media

Any composition of 2 dimensional art comprised of at least two (2) different mediums, i.e. watercolor and pastel, pen and ink with charcoal, oil and acrylic, etc.

Lot

- 25. Portrait
- 26. Figure
- 27. Landscape
- 28. Still Life
- 29. Seascape
- 30. Animals & Birds
- 31. Abstract
- 32. Any Other

Acrylic

- Lot
- 33. Portrait
- 34. Figure
- 35. Landscape
- 36. Still Life
- 37. Seascape
- 38. Animals and Birds
- 39. Abstract
- 40. Any other Computer Generated 2-Dimensional Art
- 41. Computer Generated Photographs
- 42. Abstract Computer Generated Art
- 43. Computer Generated Art -Any Other

Continued on next page

Melrose Truck Repair, Inc.

256-7770 Fax 256-5170



800-376-4230

All Makes Class 8's Service Associates

STEVE NORRIS, OWNER

305 3rd Ave. SW • Melrose, MN 56352

melrosetruckrepair.com




ARTWORK

OF THOSE 15 & UNDER Same Rules As Adult Class

Oil

- Lot
- 44. Portrait
- 45. Figure
- 46. Landscape
- 47. Still Life
- 48. Seascape
- 49. Animals and Birds
- 50. Abstract
- 51. Any Other

Watercolor & Pastels

- Lot
- 52. Portrait
- 53. Figure
- 54. Landscape
- 55. Still Life
- 56. Seascape
- 57. Animals and Birds
- 58. Abstract
- 59. Any Other

Drawings

- Lot
- 60. Portrait
- 61. Figure
- 62. Landscape
- 63. Still Life
- 64. Seascape
- 65. Animals and Birds
- 66. Abstract
- 67. Any Other

Multi Media

- Lot
- 68. Portrait
- 69. Figure
- 70. Landscape
- 71. Still Life
- 72. Seascape
- 73. Animals and Birds
- 74. Abstract
- 75. Any Other

Acrylic

- Lot
- 76. Portrait
- 77. Figure
- 78. Landscape
- 79. Still Life
- 80. Seascape
- 81. Animals and Birds
- 82. Abstract
- 83. Any other Computer
Generated 2-Dimensional
Art
- 84. Computer Generated Art

Photography

To consist of 4 prints relating to
one subject mounted on a 12x14
mount, no slides accepted.

- 1st Prize \$3 • 2nd Prize \$2
- 3rd Prize \$1

Photography must be the work of exhibitor.

Color – Adult

- Lot
- 85. Still Life
- 86. Cloud Scene
- 87. Action
- 88. Child or Children
- 89. Animals, Birds or Fish
- 90. Landscape or Water Scene
- 91. Character Study
- 92. People or Group

Color - Pre-Teen (Work Of Those 16 & Under)

- Lot
- 93. Still Life
- 94. Cloud Scene
- 95. Action
- 96. Child or Children
- 97. Animals, Birds or Fish
- 98. Landscape or Water Scene
- 99. Character Study
- 100. People or Group

Woodwork

- Grand Overall \$15**
- 1st Prize \$7 • 2nd Prize \$4
- 3rd Prize \$2
- Lot
- 101. Woodwork Article - large
- 102. Child's Furniture
- 103. Doll Furniture
- 104. Birdhouse - large
- 105. Birdhouse - small
- 106. Bird Feeder
- 107. Windmill
- 108. Wooden Toy
- 109. Lawn Ornament
- 110. Knick Knack
- 111. Woodwork – mechanical
- 112. Novelty Woodwork
- 113. Any Other Woodwork
Article
- 114. Animals
- 115. Farm Toys
- 116. Furniture
- 117. Handcarving
- 118. Woodburning

Leather Work

- 1st Prize \$4 • 2nd Prize \$3
- 3rd Prize \$2
- Lot
- 119. Original Work
- 120. Kit
- 121. Any Other



DIVISION J SENIOR CITIZENS Superintendent - Alice Peters

Entry Day - Before 11 a.m.
on Thursday

Pre-registration required.
(Only for items being judged)
Items may be sold after
judging.

Handcrafted items made by
any senior citizen 62 year of
age or older, residing in Stearns
County will be exhibited and
sold in the Senior Citizens
Building every day of the
fair. 10% commission will be
charged on all items sold. All
exhibits must be made within
the last year by the person
exhibiting. ABSOLUTELY no
soiled articles will be accepted
or judged.

CLASS S

- 1st Prize \$7 • 2nd Prize \$4
- 3rd Prize \$2

Afghans

- Lot
- 1. Knitted
- 2. Crocheted
- 3. Baby - knitted
or crocheted
- 4. Any Other Kind

Spreads

- Lot
- 5. Quilted
- 6. Crocheted

Quilts

- Lot
- 7. Appliqued
- 8. Embroidered
- 9. Cotton Patchwork
- 10. Wool Patchwork
- 11. Rayon, Silk, Polyester
Patchwork
- 12. Textile Painted
- 13. Comforter - quilt
(w/3-5 lb. bat tied)
- 14. Crib Quilt - quilted
- 15. Crib Quilt - pieced
- 16. Crib Quilt - appliqued
- 17. Crib Quilt - embroidered

Rugs

- 1st Prize \$5 • 2nd Prize \$4
- 3rd Prize \$3
- Lot
- 18. Braided
- 19. Crocheted
- 20. Hooked
- 21. Woven (loomed)
- 22. Plastic
- 23. Any Other

Continued on next page

Knitted And Crocheted Garments

- Lot
- 24. Caps or Berets - crocheted
 - 25. Caps or Berets - knitted
 - 26. Mittens - knitted or crocheted
 - 27. Scarf - knitted or crocheted
 - 28. Slippers - knitted or crocheted
 - 29. Socks - knitted
 - 30. Sweater-knitted
 - 31. Sweater - crocheted
 - 32. Stole or Shawl - knitted or crocheted
 - 33. Vests, Ponchos & Shells - knitted or crocheted
 - 34. Apron
 - 35. Articles - Easter
 - 36. Articles - Thanksgiving
 - 37. Article - Magnetic
 - 38. Articles - Styrofoam
 - 39. Articles - Plastic Canvas
 - 40. Bag - tote
 - 41. Bag - purse
 - 42. Ceramics
 - 43. Centerpiece - any craft material
 - 44. Christmas Tree Ornaments (set of 3)
 - 45. Christmas Decoration
 - 46. Christmas Tree Skirt
 - 47. Craft - bead
 - 48. Craft - crocheted or knitted
 - 49. Craft - jewelry
 - 50. Craft - crewel or needlepoint
 - 51. Craft - quilting
 - 52. Craft - stationery (set of 3)
 - 53. Flowers - any craft material (set of 3)
 - 54. Dish Towels - cross stitch (set of 3)
 - 55. Dish Towels - embroidered (set of 3)
 - 56. Dish Towels - textile painted (set of 3)
 - 57. Doily - crocheted or knitted (under 12")
 - 58. Doily - crocheted or knitted (over 12")
 - 59. Doll
 - 60. Doll Clothing
 - 61. Doll - cloth or quilt
 - 62. Dresser Scarf
 - 63. Housecoat
 - 64. Luncheon - solid crocheted
 - 65. Tablecloth - solid crocheted
 - 66. Tablecloth - textile painted
 - 67. Lap Robe
 - 68. Leather Craft
 - 69. Macrame
 - 70. Mobiles
 - 71. Picture - painted
 - 72. Picture or Wall Hanging - framed
 - 73. Picture or Wall Hanging - unframed
 - 74. Pillow - Fancy Sofa
 - 75. Pillow - bed
 - 76. Pillow Cases - crocheted edge
 - 77. Pillow Cases - embroidered
 - 78. Pillow Cases - textile painted
 - 79. Pin Cushion
 - 80. Place mats (set of four)
 - 81. Pot Holders - any other type (set of 2)
 - 82. Pot Holders - knitted or crocheted (set of 2)
 - 83. Rosaries
 - 84. Sachets
 - 85. Stuffed animal - small
 - 86. Stuffed animal - large
 - 87. Weave-it Article
 - 88. Woodwork - article of furniture
 - 89. Woodwork - children's furniture
 - 90. Woodwork - birdhouse, large
 - 91. Woodwork - birdhouse, small
 - 92. Woodwork - knick knock
 - 93. Woodwork - lawn ornaments
 - 94. Woodwork - mechanical
 - 95. Wooden Toy
 - 96. Novelty Woodwork Article
 - 97. Unfinished Woodwork
 - 98. Wood Carving
 - 99. Any Other



New Munich MEATS

Custom Slaughter of Beef & Pork, Venison processing available!

Book your beef now!
Call to check out our competitive processing prices!

HOURS

Mon: 9 am - 3 pm | Tues - Thurs: 9 am - 5 pm
Fri: 9 am - 3 pm | Closed Weekends

501 Main Street • New Munich
320-837-5214 • 320-256-4436
www.newmunichmeatsmn.com

WELCOME TO THE FAIR!



NORGREN PLUMBING



Peter Norgren

We offer a discount for veterans.



**21 Years of Plumbing Experience • Reasonable Rates
Reliable Service • New Construction
Remodels • Service • In-Floor Heat • Furnace Installations
Free Estimates • Drain Cleaning • Water Softeners**

Master Plumber License #PM067114 | 320.420.8711

Have Fun At The Fair!

Family Restaurant Nightly Specials



Thurs: **BBQ Ribs & Chicken** (5-8 pm)

Fri: **Chicken & Fish** (5-8 pm)

Sat: **Prime Rib & Steaks** (5-8 pm)

Sunday Brunch: **10 am - 1 pm**

320-352-2683

Located 10 Mi. North of Brooten on Co. Rd. 18 or 7 Mi. South of Sauk Centre on Hwy. 71, then 5 Mi. West on Co. Rd. 22



Paynesville Farmers Union Co-op Oil Co.

www.paynesvillecoop.com

- Office: 320-243-3751
- Convenience Store: 320-243-4800
- Bulk Fuel/Propane: 320-243-3751
- Fertilizer Plant: 320-243-3494

- Bulk Fuel/Propane
- Convenience Store with Hot Stuff Pizza
- 88 Octane, E-85, Blender Pumps
- Full Line Agronomy
- Custom Application

419 Business 23 E • P.O. Box 53 • Paynesville, MN

Hand Dipped Corndogs
Footlong and Original

CHEESE FRESH CUT FRIES

CHEESE CURDS
White Cheddar Wisconsin Cheese

FUNNEL CAKES

HAND-DIPPED CORN DOGS

OTTE'S CONCESSIONS

- HAND DIPPED CORNDOGS
- FRESH CUT FRIES
- FUNNEL CAKES
- CHEESE CURDS

LOCATED BY GRANDSTAND

LICENSED • BONDED • INSURED

Walker Plumbing

Heating & Sewer Service
JOE WALKER

Lic. #61280-PM

- ✦ Armstrong Furnaces
- ✦ Armstrong Air Conditioners
- ✦ Water Heaters and Softeners
- ✦ Sewer and Drain Cleaning
- ✦ New Home or Remodeling

320.554.6601 - 320.766.0341
P.O. Box 134 | Villard, MN 56385

WHATEVER YOU PUT BEFORE YOUR SOBRIETY YOU WILL LOSE.
So keep sobriety first!

Friday Walk In Assessments | 9 am - 2 pm
Free Interventions: Call 320-251-0035

266 33rd Ave S., Suite 10, St. Cloud, MN

sobrietyfirstllc.com



YOUR DEDICATION HELPS US LOOK FORWARD

Local farmers are the backbone of our food supply, and we thank you for your hard work. It's our honor to support you with comprehensive insurance coverage. Trust in Tomorrow.®

GRINNELL MUTUAL

NORTH AMERICAN INSURANCE AGENCY
naia@nesbitagencies.com | (320) 254-3191

"Trust in Tomorrow." and "Grinnell Mutual" are registered trademarks of Grinnell Mutual Reinsurance Company. © Grinnell Mutual Reinsurance Company, 2026.

SCHLANGEN'S CUSTOM CABINETS, INC.

550 Meeker Ave. E. • Eden Valley, MN 55329
320-453-2718
www.schlangenscabinets.com

WE MEASURE, DESIGN, BUILD, & INSTALL EACH JOB.

Mid Minnesota Excavating, LLC

Ditching and Site Prep
Basements • Additions
Sand • Class 5

CALL TODAY!

Owner/Operator - Joel Hinnenkamp
320-492-0214
Sauk Centre, MN

Mid Minnesota Excavating



Columbia Gear Corporation

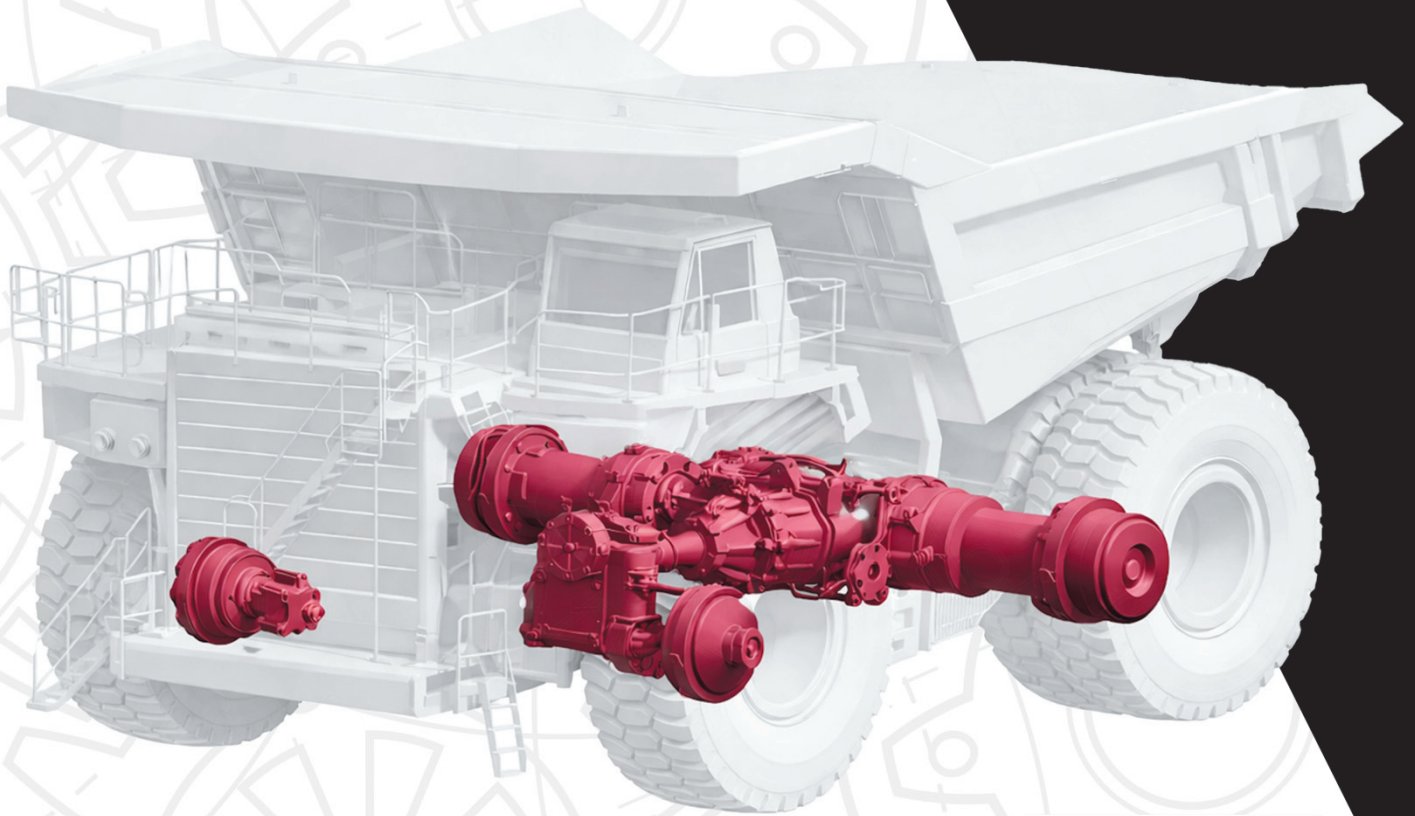
**Building Gears & Careers
for over 80 years!**

Industries served:

Off Highway/Construction/Mining
Agriculture | Aerospace | Air/Gas

WE ARE HIRING!

- Looking for machinists on our 2nd shift and weekends
- Great pay, benefits & shift differential
- Weekly pay
- PTO immediately upon hire
- 401(k) immediately upon hire



JOIN THE TEAM!

Helping build and move America

**320-356-7301 | 530 County RD 50 Avon, MN 56310
WWW.COLUMBIAGEAR.COM**



3RD ANNUAL



HOT WING

CONTEST

AUGUST 1, 2026

5:30PM | HERALD BANDSHELL

\$20 ENTRY FEE
OPEN TO THE FIRST 25
CONTESTANTS.

CAN YOU HANDLE THE HEAT?



1st PLACE
\$500
+TROPHY

2nd PLACE
\$100

3rd PLACE
\$20

All contestants
must sign waiver
of liability.
10 levels of 1ex.



The Stearns County Fair invites you to our **Annual Daycare Day at the Fair!**
 Daycare Day will be held **Friday from 10 a.m. to 2 p.m.**
Theme: Outdoor Adventures
 Judging 10 a.m. to 12 p.m.

Children will have the opportunity to display and discuss their craft with 4-H Junior Leaders. In return, the children will receive a participation ribbon and other goodies (free malts, milk and treats).

Also available to the daycare groups will be guided tours of the agriculture building by the 4-H Junior Leaders upon request.

1-2 p.m. Children's Gardening Activity at the Pollinator Garden.

Please complete and mail the registration form by July 21.

Upon receiving your entry form, a confirmation letter will be sent along with a free parking pass. If you have any questions, please call Vern Frericks at 320-256-3899.



Return form to:
 Stearns County Fair
 Vern Frericks
 5 5th St. NE,
 Melrose, MN 56352

Daycare Day Entry Form

Name of Daycare _____

Contact Person's Name _____

Contact Person's Phone _____

Contact Person's Address _____

Age Range of Children _____

Number of Children visiting _____

Number of Adults visiting _____

Barn Tours (check one) Yes No

Please clip and return by July 21

Get ready
GET SET SHOW

- Stock up on show feed now!
- Get wood shavings
- Check out our show tack

We will have wood shavings available for sale at the fair.
PICK UP YOUR LAST MINUTE SHOW SUPPLIES AT OUR BOOTH!

320-351-2227
SAUK CENTRE COUNTRY STORE
 3/4 Miles West of the Downtown, Stoplights on Sinclair Lewis Ave. in Sauk Centre, MN

THE AMERICAN LEGION CLUB • POST 67
 Sauk Centre • 320-352-9931

Come see us at the Beer Garden!

SERVING BEER 10 AM - MIDNIGHT & BRATS & KRAUT FROM 11 AM - 9 PM
Extended bar and seating area!
 GAMBLING LICENSE #01780

FAIR PARKING

VFW is again coordinating parking at the fair. Thank you for your courteous parking!

VFW is accepting NEW MEMBERS
 Contact John at 320-250-3271 for details.

Remember to get your extended parking pass for \$15. Half of the money collected is used for fair activities.

Entertainment *Schedule*

**JULY 29 –
AUGUST 2**

Friday, July 31
8 p.m.–Midnight
Herald Bandshell

If
Nothing
Else



Donny
Brang

Thursday, July 30
12–3 p.m. | Heritage Stage

Friday, July 31
3–6 p.m. | Herald Bandshell

Sandy
Weisser
Music

Wednesday, July 29
1–4 p.m.
Herald Bandshell



Pete
Pete

Thursday, July 30
7–11 p.m.
Herald Bandshell

Tricia
& the Toonies

Friday, July 31
1–2:30 p.m., 3–4:30 p.m., 5–6:30 p.m.
Heritage Stage

Saturday, August 1
8 p.m.–Midnight
Herald Bandshell

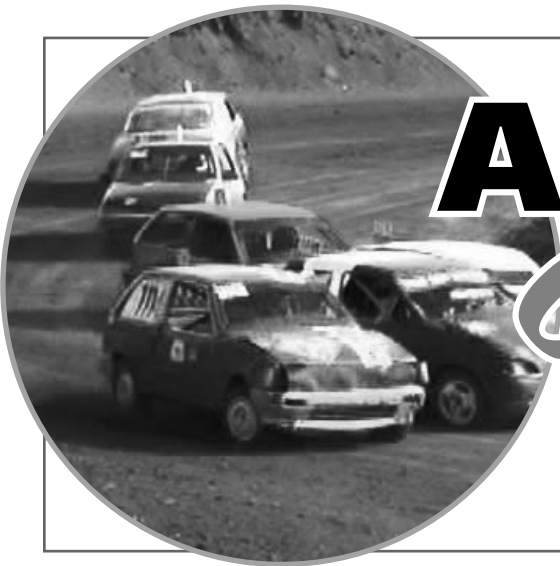


Dos **Coronas**



Gig *Noonan*

Thursday, July 30
12–3 p.m. | Herald Bandshell



Auto *Cross*

Sunday, August 2
1–4 p.m.
Grandstand



Pam & Sherwin

Linton & The Cotton Kings

Saturday, August 1
1–2 p.m., 2:30–3:30 p.m.,
4–5 p.m.
Herald Bandshell

Wednesday, July 29
7–10 p.m.
Grandstand



IV *Play*

Limited Seating Available!
Please bring your own lawn chair.



FFA SUPERINTENDENT
Duane Lichy • 320-249-5266

ACTIVITIES

Blue \$4.00 • Red \$3.00 • White \$2.00

Lot

- F1. "C" Clamp. 4"x6" capacity range, throat and bite: All welded construction all thread must be cut or tapped by student: "C" must be able to withstand 250 pound hanging weight without permanent deflection: grind permissible.
- F2. Bale Hook. All welded and forged construction.
- F3. Feed scoop (9th and 10th grades only) 1 1/2-2 quart capacity: Soldered or brazed and riveted construction permitted, metal or wood handle.
- F4. Saw Horse, metal or wood construction.
- F5. Nail or tool carrier (9th and 10th grades only) Compartments, glue, screw, and nail construction.
- F6. Two-wheel bag, can or welder cart. All metal, welded or brazed construction.
- F7. Portable work light. Adjustable height pedestal design: Appliance outlet: on-off switch attached to standard: 25 feet of 3 wire cord minimum: at least 500 watt capacity.
- F8. Drawbar hitch pin. Shaped by forging, machining or grinding. Assemble by welding, brazing or fasteners.
- F9. Concrete Float or Darby. Wood with screw and glue construction.
- F10. Extension cord unit, metal or wood. Metal or wood construction has 3 wire (grounded) type rubber coated conductor with wire gauge appropriate to length and design load.
- F11. Eyebolt and Nut. Shaped by forging or cold bending. Tap and Die used for threads.
- F12. Tool sharpening gauge. Made of brass, aluminum or older appropriate metal.
- F13. Chipping hammer. Made of mild steel stock and forged or cut to proper shape.
- F14. Chisels and punches. Tool steel is forged to shape and heat treated.
- F16. Special Metal projects
- F17. Special Wood projects
- F18. Special Concrete projects
- F19. Special Electrical projects
- F20. Miscellaneous projects.

CROPS

Blue \$4.00 • Red \$3.00 • White \$2.00
Open 2 qt. sample

Lot

- 1. Barley
- 2. Oats
- 3. Spring Wheat
- 4. Winter Wheat
- 5. Shelled Corn
- 6. Rye
- 7. Soybeans
- 8. Clovers
- 9. Any forage not listed
- 10. Old ear corn (10 ears)
- 11. Alfalfa hay-one slab 8" from bale

- 12. Grass hay - one slab 8" from bale
- 13. Small grain sample-about 50 stalks and heads shown in bundle
- 14. Corn sample-4 stalks of corn shown in bundle
- 15. Single ear of corn-old corn

MISCELLANEOUS FARM & HOME EQUIPMENT CONSTRUCTION

Blue \$12.00 • Red \$10.00 • White \$8.00

Individual entry only. Each entry must be accompanied by plan sheet and bill of materials showing costs on separate sheets of 8.5 x 11 white paper or tagboard. Plan sheet may be of commercial origin.

Lot

- H1. Home farm shop equipment and power tools (Examples: Workbenches, tool cabinets, power saws)
- H2. Labor saving equipment, largely of wood (Examples: Self-feeders, holding pens, chutes)
- H3. Labor saving equipment, largely of metal (Examples: gates, feed carts, post drivers)
- H4. Home and farmstead equipment, metal and/or wood (Examples: yard furniture, gates, etc.)

MAJOR FARM EQUIPMENT

Blue \$12.00 • Red \$10.00 • White \$8.00

Items must be capable of admission through a 10 foot door. Each entry must be accompanied by a plan sheet and a bill of materials showing cost of separate sheets of 8 1/2 x 11 white paper or tagboard. Plan may be of commercial origin.

Lot

- I1. 4 wheel wagon, entry to be the running gear of a 4 wheel wagon.
- I2. 2 wheel trailer, entry to include the running gear and box, or rack for a 2 wheel trailer.
- I3. Carpentry, entries constructed largely of wood, i.e. wagon boxes, trailer boxes, large feeders, farrowing crates, brooder house, etc.
- I4. Metal construction, entries consisting largely of metal i.e. garden tractors, grain or bale elevators, livestock gates, etc.

HONEY

Blue \$5.50 • Red \$2.00 • White \$1.75

Sample could be:

- Lot 1. A 4 pound sample
- Lot 2. Comb honey
- Lot 3: Full frame honey

LIVESTOCK EXHIBITS

Same rules and classes as 4-H. Animals must be shown in open class to receive the FFA premium. **Check-in and ID verification same time as 4-H.**

4-H AND FFA DAIRY JUDGING CONTEST

1:00 p.m. Saturday,
Registration starts at 12:30
Show Arena
Team Placing: 1st Place \$30
2nd Place \$20 • 3rd Place \$10

Junior Division: K-8th grades,
Senior Division: 9th-12th grades.
Individual overall Champion in Junior and Senior Divisions. Four members per team. Top three individual scores are used to determine team scores.

4-H 2026 Fair Schedule

General Project Judging Day - Tues, July 28

Noon	Booth setup must be complete by 1:00p
2:00p	Judges Assistant Orientation-4-H Stage
2:00p	Judges Orientation-Food Stand
3-7:00p	4-H General Judging
9a -6p	4-H Livestock stalling prep
5:30p	4-H Pet Show - 4H Stage
4:30-5 p	4-H Judges Supper Break
7:00p	4-H Building Closes

Livestock Entry Day - Wednesday, July 29

8a - 7p	4-H Livestock stalling
10a-2p	4-H Rabbit Check-in/ID verification
Noon	4-H Building Opens
12-5p	4-H Horse Vet Check-In (Weds only)
12-2p	ALL Beef/Goat/Sheep/Llama ck & weight
2:30p	Arts-In Dress Rehearsal- 4-H Stage
3-5:00p	ALL Beef, Goat, Sheep, Llama check-in/ID & weigh-in
4-5:00p	4-H Dairy/Poultry Check-in/ID verification
5:00p	4-H RABBIT SHOW – Show Arena (FFA/Open Class follows)
7:00p	ALL 4-H LIVESTOCK IN PLACE BY 7:00PM
9:00p	4-H Building Closes

Thursday, July 30

8-9:00a	4-H Swine ONLY Weigh-in, Check-in
8:00a	4-H POULTRY SHOW – Show Arena (FFA/Open Class follows)
10:00a	4-H Building Opens
Noon	Arts-In Performance – 4-H Stage
2:00p	4-H DAIRY GOAT SHOW–Show Arena (FFA/Open Class follows)
3:00p	4-H SHEEP SHOW - Show Arena (FFA/Open Class follows)
5:00	Arts-In Performance – 4-H Stage (tentative)
6:00p	4-H MEAT GOAT SHOW–Show Arena (FFA/Open Class follows)
9:00p	4-H Building Closes

Friday, July 31

9:00a	4-H DAIRY SHOW– Show Arena
9:00a	4-H HORSE SHOW– Outdoor Horse Arena
10:00	4-H Building Opens
10:00a-Noon	Day Care Day Judging- 4-H Building (pre-registration required)
Noon	Arts-In Performance – 4-H Stage
3:00p	4-H BEEF SHOW- Show Arena (FFA/Open Class follows)
3-4:00p	Performing Arts Showcase – 4-H Stage
4:00p	4-H Livestock Demonstrations– Poultry/ Rabbit Barn
5:00p	Deadline to sign up for Auction
5:00p	Arts-In Performance – 4-H Stage
7:00p	4-H SWINE SHOW – Show Arena
9:00p	4-H Building Closes

Saturday, August 1

9:00a	Livestock Auction Participant Meeting
9:00a	4-H Horse Grand Entry – Outdoor Horse Arena
9:00a	4-H HORSE SHOW– Outdoor Horse Arena *Horse Costume Class will follow Horse Show
10:00a	4-H Building Opens
10:30a	4-H LIVESTOCK AUCTION – Show Arena
Noon	Arts-In Performance – 4-H Stage
12:30p	Dairy Judging Contest - Show Arena
1:15p	4-H Rocket Launch Safety Meeting
1:30p	4-H Rocket Launch – Grandstand
2:00p	4-H Deadline to accept or decline State Fair Trip(s) - 4-H Info desk
3:00p	4-H Public Fashion Revue Staging
3:30p	4-H Public Fashion Revue – 4-H Stage
4:30p	Arts-In Performance – 4-H Stage
5:00p	4-H LLAMA-ALPACA SHOW – Show Arena
6:45p	4-H Premiere Showmanship Participant Meeting
7:00p	4-H Premiere Showmanship Contest– Show Arena
9:00p	4-H Building Closes

Sunday, August 2

11:00a	4-H Building Opens
11:30a	RABBIT AGILITY SHOW-Show Arena
12:30p	4-H Horse Awards Ceremony – 4-H Stage
1:30p	Arts-In Performance – 4-H Stage
1:30p	State Horse Show Participant Meeting
2:00p	STATE FAIR MEETING – Livestock & Dual - 4-H Stage
4:00p	STATE FAIR MEETING – General Projects, 4-H Stage
4:00p	Dairy Released (stall cleaning is required)
5:00p	Exhibit Check-out – 4-H Building
5:00p	Livestock Released (stall cleaning is required)

4-H Foodstand Hours - 2026

Wednesday	4:00P - 8:00P
Thurs-Sat,	8:00A - 8:00P
Sunday	8:00A - 4:00P

Each family is responsible for signing up for at least one shift at the

foodstand: (<http://z.umn.edu/stearnsfoodstand>)

STEARNS COUNTY FAIR RANCH RODEO

**Please remember
your Coggins!*



Wednesday,
July 29, 2026

5:30 p.m.

Sauk Centre,
MN

EVENTS

Team Sorting
Team Doctoring
Trailer Loading
Sort & Pen

DETAILS

Cost: \$ 160/Team
4 Person Teams
Registration Closes
at 5:00 p.m.

Stock Contractors: Birch Coulee Arena

For More Information, contact:

Meghann: 507-829-8647 | Eve: 612-202-8720

Leczi Fleischhacker: 320-293-2936

Building Relationships Since 1958



RESIDENTIAL • AGRICULTURAL • LIGHT COMMERCIAL • HARDWARE & PAINT



520 12th St. S, Sauk Centre
320-352-2255
826 County Road 13, Melrose
320-256-4275

KRAEMERLUMBER.COM

Bonanza Valley State Bank

Est. 1894



Big enough to serve you, small enough to know you.

320.346.2234

www.bvsb.bank

Member FDIC P.O. Box 400 • Brooten MN 56316

KEN'S IRON SALVAGE & RECYCLING, INC.



320-352-6878
ON THE FARM PICKUP

Roll-Offs Available Mon-Fri 8am-4:30pm
Sat 8am-11:30am

11194 225th Ave • Sauk Centre, MN 56378

Have fun at Stearns County Fair Bottoms Up

FREE Wine Tasting
Everyday, All Day!!

(320) 254-3339

43316 226th St. • Belgrade

Mon.-Thurs. 11am - 9pm; Fri.-Sat. 10am - 9pm; Sun. 11am - 4pm





Thursday, July 30, 2026 at 5:00 PM

at the Herald Bandshell

\$500 FIRST PRIZE

\$20 entry fee. Limit of first 25 contestants.

**ALL THE HOT DOGS
YOU CAN EAT IN 10 MINUTES.**

\$500 first prize plus trophy, \$100 second prize, and \$20 for third prize.

Entry fee: \$20. Maximum of 25 contestants. | All contestants must sign waiver of liability.

EVENT RULES:

- Most hot dogs and buns consumed in 10 minutes wins.
- All contestants must sign a waiver of liability.
- Minors can compete, but a parent must sign and notarize the waiver of liability.

GENERAL RULES:

- Event staff has the final say if a contestant needs to stop or exit the contest.
- Contestants agree to medical aid consent if needed.
- Contestants must clean up if they cannot keep the food down.

FEATURING MN GOLD HOT DOGS



FIND US AT THE
STEARNS COUNTY FAIR

**Celebrate the 2026 Stearns County
Sesquicentennial Farms and Farm Families!**
Sunday, August 2 at the Heritage Stage!

**Congratulations to:
Sesquicentennial Farms**

- Nietfeld, Melrose - 1874
- Philip & Bonnie Poepping, Melrose - 1876
- Wuertz Farm, Paynesville - 1876
- Schumer Family Farm, St. Stephen - 1867



*Visit the Adventures in Ag
building for
youth-focused, hands-on
agriculture learning experiences!*



**Save the Date for the
Stearns County Farm Bureau
Annual Meeting!**

August 16, 2026
Roscoe Community Center

Contact us for more information:
stearnscountyfarmbureau@gmail.com



FREE ADMISSION
FOR STEARNS COUNTY RESIDENTS IN 2026

www.stearnshistorymuseum.org

Garage Doors • Garage Door Service & Repairs
Garage Screen Doors • Garage Door Openers & Accessories

**WE WELCOME YOU HOME
WITH STYLE AND SECURITY**



ALEXANDRIA
6351 Highway 29 S.
Alexandria, MN 56308
(320) 763-3667

BRAINERD
10727 Brent Drive
Brainerd, MN 56201
(218) 829-8365

ST. CLOUD
2150 Frontage Road S.
Waite Park, MN 56387
(320) 253-1310

WILLMAR
1301 East Highway 12
Willmar, MN 56201
(320) 235-7688



Visit our website or one of our
showrooms to see all the latest trends!

www.AmericanDoorWorks.com

BELGRADE CO-OP ASSOCIATION



- AGRONOMY**
- PROPANE**
- REFINED FUELS**

320-254-8231 www.belgradecoop.com

COUPON

15% OFF

ALL GIFT ITEMS

EXPIRES JULY 31, 2026

COLD SPRING CO-OP & COUNTRY STORE

300 Main St., Cold Spring, MN 56320 | (320) 685-8651



MUST PRESENT COUPON. NOT VALID WITH ANY OTHER OFFERS.

Monday - Friday: 8:00 am to 5:30 pm
Saturday: 8:00 am to 1:00 pm • Closed Sunday



Stearns County Fair

BEST BURGERS AT THE FAIR!

- Smoked Turkey Legs
- Hot Dogs & More



BE SURE TO COME SEE US AT THE FAIR



FLC
TO SERVE UNCONDITIONALLY

First Lutheran Church

304 Elm Street South, Sauk Centre, MN 56378
320-352-3623 Office

Effective drainage

Reasonable rates.

Agricultural Engineering & Construction led by

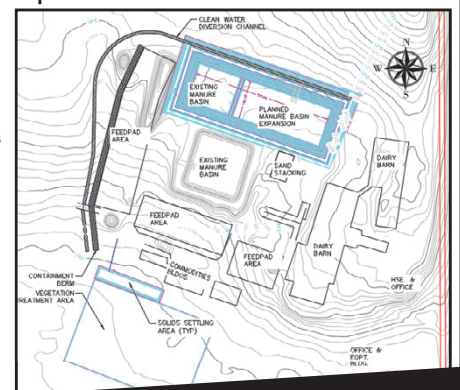
Mike Nelson
Professional Engineer

Ag Tech Drainage delivers practical, compliant systems that improve efficiency and protect water resources.

SERVICES INCLUDE:

- Manure Storage & Management Systems
- Composting & Stacking Slabs
- Feed Pad Runoff Containment
- Permitting & Environmental Compliance - Mike can help navigate NRCS EQIP processes and can manage your design/construction compliance.

Licensed in MN, ND, SD & WI



AG-TECH-DRAINAGE
'Don't Delay - Drain Today'
agtechdrainage.com



PROUD TO BE PART OF THE AG INDUSTRY!

We Offer Site Prep, Drainage Tile, Land Clearing, Excavation, Pump Stations And So Much More!

Brad Herickhoff, Owner 320-351-4872

BUILDING ON

TRUST

IN
THE

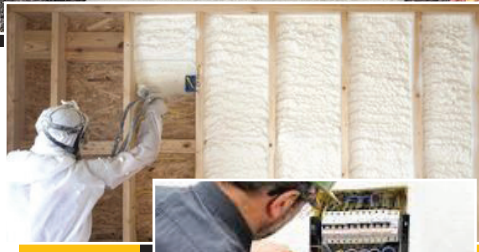
TRADES



If you want to get your Company Name out there and increase your lead generation with good “actual” leads. Only Trades brings you the local leads through finding your business using your zip code. Linking to your website or Social Media.

We’re just after a good, honest company and good honest people, people who are legitimate that want local leads!

- Brandon Rehnke and Jarrod Hannon



Fill out the form online
and get **BRANDED!**

**FIND A PRO
NEAR YOU!**

Local • Honest • Dependable
WWW.ONLYTHETRADES.COM

LARGE **Lake Country** SMALL
ANIMAL VETERINARY SERVICE P.A. ANIMAL

Caring for all
YOUR PETS

- Dogs
- Cats
- Livestock
- Birds
- Pocket Pets
- Reptiles *and more!*

WE PROVIDE HOLISTIC CARE!
Acupuncture included

320.845.6930 « LAKECOUNTRYVETSERVICE.COM

551 RAILROAD AVE., ALBANY
Located across from the Kraft plant

Click on our online store tab - Dog and Cat Products + More!

SPRING
Into a **TYM**



0% for 60 months
on select models

Savings amount and financing offers on select models. Visit your local TYM dealer for details. Limited to purchase of in-stock dealer inventory of new TYM tractors. Other exceptions and limitations apply. Valid May 1 to June 30, 2026.

River Power & Equipment
sales@riverpowerequipment.com

819 Main Street E
Richmond, MN 56368
320-353-1000



www.riverpowerequipment.com

RAMLER
Trucking



TRUCK & TRAILER REPAIR
A 15th Consecutive Platinum Safety Award Winner!

400 13th St., Albany, MN
320-845-4500

RAMLERTRUCKING.COM

THE GUNS AND GEAR STORE.com

Hunting • Reloading • Shooting • Outerwear

THE BEST SERVICE AND THE BEST PRICES ALWAYS!

Monday - Saturday: 10 am - 8 pm | Sunday: 10 am - 5 pm

2103 Frontage Road North,
Waite Park, MN 56387

PHONE: 320-253-HUNT (4868)

NEW SALE EVERY WEEK!

Shop Online: www.THEGUNSANDGEARSTORE.com



D&H FIELD SERVICES, INC.

Darrin Herickhoff
320-760-0848

CAREER OPPORTUNITIES AVAILABLE!

Check our website under "EMPLOYMENT"

Drag Line & Spreaders

- Liquid Manure Pumping
- Solid Manure Spreading
- Trucking
- Pushing & Packing
- Forage Support

Unlimited Possibilities!

www.dhfieldservices.com



ENJOY THE COUNTY FAIR!



- Complete Part Manufacturing
- Including Plating, Heat Treating, Grinding and Other Processes
- Steel, Aluminum, Brass, Plastics and Other Materials



Albany, MN • www.GalaxyPrecisionMN.com
320-836-2184 • info@galaxyprecisionmn.com

DRIVE LUXURY

RELIABLE
AUTHENTIC * DEPENDABLE * CONSISTENT

FAST
EFFICIENT * SWIFT * RAPID

AGILE
CAPABLE * PROFICIENT * SKILLED

Granite City
MOTOR CAR

(320) 281-9007

8055 CO RD 75, ST JOSEPH, MN
1 MILE WEST OF MILLS FLEET

GRANITECITYMOTORCAR.COM



Culligan



Better Water Matters.

Proudly serving customers for over 75 years

- Free water consultation from local water experts
- Salt and water delivery
- Water softeners and filters
- Drinking water systems and coolers

FAMILY OWNED SINCE 1949

625 Lincoln Loop | Sauk Centre, MN 56378
320.352.6587
culliganh2o.com

ENGLE
INDUSTRIAL

Building quality tanks since 1976

**PERSONALIZE
YOUR HOME OR FARM!**



39465 415th St.,
Sauk Centre, MN 56378
320-429-0989
engletanktrailer@gmail.com

Your Complete Farm & Home Store

- | | | |
|--------------------|-----------------|--------------------|
| - Farm | - Hardware | - Automotive |
| - Sporting Goods | - Plumbing | - Appliances |
| - Live Bait | - Tools | - Camping Supplies |
| - Hunting Licenses | - Paint | - Electrical |
| - Fishing Licenses | - Lawn & Garden | |

AND MUCH MORE!



Hunting & Fishing Licenses Available At All Locations!



FLEET 
SUPPLY

WWW.FLEETSUPPLYMN.COM

SAUK CENTRE
1050 Centre Street • Ph. 320-352-5261
PAYNESVILLE
Hwy. 55 West • Ph. 320-243-3556
GLENWOOD
Hwy. 28 & 55 • Ph. 320-634-5209
LITTLE FALLS
Hwy. 27 • Ph. 320-632-9240

GLENCOE
3105 10th St. • Ph. 320-864-4304
LONG PRAIRIE
Hwy. 71 South • Ph. 320-732-6195
FARIBAULT
80 Western Ave. • Ph. 507-334-3232



No Cash...No Problem. Charge It!



BEHIND EVERY PROJECT IS A
True Value

TRUCKERS INN

The TRUCK STOPS here



COMING SOON

5TH ANNUAL T/NN TRUCK SHOW
AUG 28TH & 29TH, 2026

ENJOY THE STEARNS COUNTY FAIR



STATION (320) 352-5241

MINNESOTA DRIVELINE INC.



"The Driveshaft Experts"

320-255-1688 • Minnesotadriveline.com



**NEW LOCATION!
NEW FEATURES, NEW ACTIVITIES**

FFA Hub - Come learn from local FFA Chapters!

NEW THIS YEAR:
Forage Analysis Contest
-Entry form located in fairbook-

Adventures in Ag - Hands on learning exhibit

Inspire Ag Can Lab - Combine Simulator

Youth Farm Safety Demonstrations

2nd Annual Milk 5k Run - Saturday, Aug 1



Find us in the Ag Building!
Contact us for more information:
stearnscountyfarmbureau@gmail.com





QUALITY

Products & Services

FOR ALL YOUR FARM NEEDS

8' • 9' • 10' AG-BAGGER RENTALS

Ag Bags, Twine, Net Wrap & Bunker Covers In stock



COMPETITIVE PRICES ON BAG & BULK FEEDS!



Cattle Equipment



ATTACHMENTS



**We repair all makes & models:
ATVs, side by sides, snowmobiles, snow blowers chainsaws,
lawn mowers & lawn care equipment, etc.**



Hwy 25 • Pierz • 468-2168

LITTLE ROCK, MN
320-584-5147

PIERZ, MN
320-468-2168

LASTRUP, MN
320-468-2543

BUCKMAN, MN
320-468-6433

www.SunriseAgCoop.com

Find us on



**SUBSCRIBE OR
RENEW YOUR
SUBSCRIPTION**

The **Star Post**
Melrose Beacon ★ Albany Enterprise

Sauk Centre
Herald

and receive
a \$15 Gift Certificate from
one of the following*

Avon Cabin Café
Crazy J's
Melrose Bowl
Padua Pub
Saukinac Campground
Truckers Inn
True North/
Taqueria Bravo

Stearns County

FAIR

STAR Publications

ENJOY ANOTHER YEAR OF COMMUNITY NEWS COVERAGE

**Renewal or new Subscription must be done at the Star Publication booth at the Stearns County Fair.
Gift certificate received from the restaurant listed. No exchanges or refunds.
Cannot be combined with other offers or promotions. While supplies last. Quantities are limited.*



"For All Your Insurance Needs!"

- AUTOS
- HOMES
- COMMERCIAL
- FARMS
- HEALTH
- BOATS/ATVs

Ben B. Ettle
MN License # IN-40286154

320-285-2299 • 320-733-6665 - text only
kutt@meltel.net Grey Eagle, MN 56336

DESIGN TILE & FLOORING

Free Estimates & Consulting

TILE • WOOD • LAMINATE • CARPET • LVP



New Construction/Remodels/Repairs/Water Damage
Visit our Showroom • 301 34th Ave S - Waite Park, MN • (320)774-1999

YOUR HOME Deserves the Best!

HOMES, GARAGES, SHEDS, ROOFS, COMMERCIAL BUILDINGS, FARM & LIVESTOCK BUILDINGS

- ✓ Saves 30-50% on Energy Costs
- ✓ Completely Seals and Reduces Noises
- ✓ Increase Structural Strength
- ✓ Highest R Value Per Inch
- ✓ Improves Indoor Air Quality
- ✓ Eliminates Condensation

OVER 100 YEARS COMBINED EXPERIENCE
HEALTH - SAFETY - SAVINGS - COMFORT
320-852-7050
sales@tricityfoam.com
www.tricityfoam.com



Don't Replace the Concrete LET US RAISE IT!

UNEVEN SIDEWALKS, DRIVEWAY, PATIO, POOL DECK, STAIRS?



We Can Level & Raise Most:

- Uneven Concrete Sidewalks
- Sagging Concrete Patios
- Settling Concrete Stairs
- Uneven Commercial Floors
- Dipping Concrete Driveways
- Sinking Concrete Garage Floors
- Sunken Concrete Pool Decks
- Voids Under Roadways

James Ward, sales
320-852-7050
james@tricityfoam.com

- Fast and economical - no demolition to your existing concrete
- Less than half the cost of pouring new concrete
- Lightweight material with superior compression strength
- Expands to fill voids - stops further soil erosion
- Small holes are drilled, foam is injected, and holes are filled again
- Complete quickly with minimal disruptions - most jobs done in a day
- No disposal cost from demolition - no damage to surrounding landscape

PERSONALIZED SERVICE, PROFESSIONAL RESULTS!

LICENSED & INSURED

- Residential & Commercial
- New Construction & Remodels
- Interior & Exterior
- Doors & Trim Custom Prefinishing
- Log Homes
- Deck Staining & Sealing




320-852-7050
sales2@tricityfoam.com
30+ YEARS EXPERIENCE
www.tricityfoam.com

Experience makes the difference!
WE OFFER FREE ESTIMATES!



TRAUT COMPANIES

THE EXPERTS IN EVERYTHING WATER

- Farm Irrigation
- Water Treatment
- Water Softeners
- Agricultural, Residential and Commercial Wells
- Sonic Drilling

Learn more at trautcompanies.com

20+ YEARS OF QUALITY SERVICE!



Call Paul for all your **PORTABLE WELDING NEEDS!**
Aluminum, Stainless Steel & Cast Iron



PAUL'S WELDING & REPAIR

196 West St. S, St. Martin | 320-548-3300

Expanding While Being Rooted in Values



Over the past two years, owner and CEO Derek Mueller has continued to grow Lifestyle Lumber while staying true to the values he learned growing up on his family's farm and spending many years in the construction industry.

"We've stayed committed to our roots — putting my trust in God, valuing family life, doing our best even when the job isn't easy and treating customers like neighbors," Mueller said.

Lifestyle Lumber has expanded their reach by taking over the former Reis Lumber & Construction in Bowlus.

"(This is) a community that deserves to keep its small-town lumber yard alive and thriving," Mueller said of the city of less than 300 residents.

Mueller works alongside his wife, Sadie, who has joined the team.

"Bringing together the small-town family feel even more," Mueller said. "(My son) Walker and (daughter) Georgia (take) any chance they get to go to the lumberyard and help."

What started as a single location operation has now evolved into a multi-site business offering a full line of building materials, millwork, windows, doors, agricultural building supplies, pole-shed packages, custom material takeoffs and delivery services. It also offers support for homeowners, farmers and contractors across Central Minnesota, Mueller said.

Throughout the expansion, Mueller has watched his employees strengthen their skills.

"Watching our team step into their roles, support each other and carry those values forward is one of the most rewarding parts of this entire journey," Mueller said. "It feels less like building a business and more like strengthening a community."

Through advanced technology, growth in their internal system and expansion of their product line, Lifestyle Lumber's goal stays the same — serve rural communities with honesty, reliability and the kind of personal relationships that only small-town lumberyards can provide.

"My background taught me that when a community loses its core businesses, families suffer, builders suffer and towns slowly fade," Mueller said. "When the Bowlus location became available, we knew it was our chance to preserve a long-standing community resource and carry it into the future. Growth, for us, has never been about becoming the biggest — it's about ensuring rural contractors, farmers and homeowners continue having access to honest service close to home."

In the future, Mueller plans to keep Lifestyle Lumber rooted in the same small-town values that have shaped their past. They are focused on strengthening the team, improving systems and living out their core values.

"Coming from a large family and rural farm setting, you grow up understanding hard work, sacrifice, and the responsibility



of protecting your family name and brand," Mueller said. "Seeing Lifestyle Lumber grow into what it is today makes me incredibly proud, not just of the business, but of the people behind it."

Mueller said he plans to continue investing in the communities they serve, supporting local schools, ag programs, trades education and small-town development. He is also committed to expanding the products offered, improving delivery capabilities and making it easier for customers to get what they need.

"We want to remain the kind of lumberyard where people feel known by name, treated with respect and supported from the start of a project to the final nail," Mueller said. "Ultimately, Lifestyle Lumber's future is simple — stay true to our roots, serve rural Minnesota with excellence and keep small-town lumberyards alive for the next generation."

Paid for advertisement



**Lifestyle
Lumber**

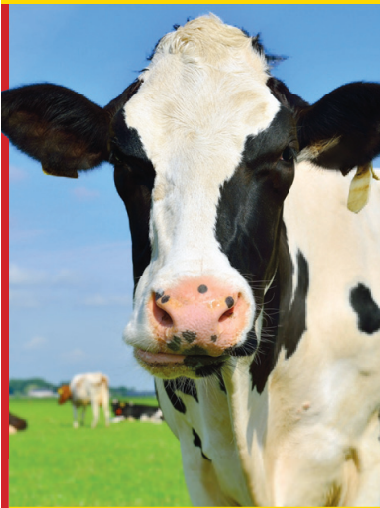
St. Martin
(320) 548 - 3459
375 Industrial Drive

Bowlus
(320) 584 - 3151
52 Main Street

Long Prairie Livestock Auction Company

43 Riverside Drive
Long Prairie, MN 56347

Home of the longest running dairy sale in the Midwest!



SALES EVERY TUESDAY!

Hay/Straw, Baby Calves,
Feeder Cattle,
Replacement Cattle,
Goats, Sheep, Hogs,
Fat and Slaughter Cattle

DAIRY SALES HELD EVERY FRIDAY

Dairy cattle sell at noon

For an on the farm estimate or current market info, call 320-732-2255
WE APPRECIATE YOUR BUSINESS!

Market Phone 1-320-732-2255

JUETTNER

motors
.com
Alexandria, MN

Celebrating
50
years

Your vehicles reliability is our

TOP PRIORITY.

SHOP JUETTNER.

320-763-3126

BUILD SOMETHING LEGENDARY

▶ ACHIEVE
BETTER

MASSEY FERGUSON

Lake Henry

Implement inc

Visit LAKE HENRY IMPLEMENT for all your lawn & farming equipment

320-243-7411 • 23661 Hwy. 4, Lake Henry, MN

www.lakehenryimplement.com

Much more than mattresses

Happy Sleeper a furniture source serving local customers



Happy Sleeper
MATTRESS & FURNITURE STORES

4-24th Ave. S | Waite Park, MN | 320-252-0660
www.HappySleeperFurniture.com

A INSURANCE AVENUES

Home - Farm
Business - Auto
Life & more!

Tri-County Insurance
Your Road to
Insurance
Made Simple.



One Agency, Three Locations
AVON | SAUK RAPIDS | FOLEY

insuranceaves.com
320-251-2552



Doug Miller & Gene Miller

14826 Stearns Line Road, Sauk Centre, MN 56378
320-241-3684 | www.cornerstonetrailerrepair-electric.com

Wiring, brake repair, bearings, welding, repair, upgrades & accessories • Acts: 4:10-11

Gutter Shutter™

REVOLUTIONIZING
**THE GUTTER
INDUSTRY.**

A better gutter system.
A better experience.
Built to last a lifetime.

HEARD ON
WJON
AM 1240 FM 95.3



**WIDE MOUTH
OUTLETS**



**HIGH FLOW
CORNERS**

**NO MORE CLEANING. NO MORE WORRIES.
JUST PROTECTION THAT LASTS.**



JUST ADD WATER. WE'LL DO THE REST.



Professional Commercial & Residential Lawn Care

- Fertilizing
- Weed Control
- Mosquito Control
- Lawn Mowing
- Edging
- Seasonal Clean-Up
- Dethatching
- Aeration
- Overseeding
- Parking Lot Sweeping



Mosquito Yard Guard

owned and serviced by Ehlinger Lawn Service, provides Central Minnesota mosquito control services so you can enjoy your backyard day or night!

We provide mosquito control, in addition to our other services, to both residential and commercial locations.

320-250-9337

www.EhlingerLawn.com

Family Owned & Operated • Est. 1996

\$25

Good Neighbor Discount

Refer a friend or neighbor and each receive \$25.00 off your complete program.

CALL FOR MORE DETAILS 320-250-9337

10% OFF

A Five Application Lawn Treatment Program

***Valid for new customers**

CALL FOR MORE DETAILS 320-250-9337

KENSINGTON BANK
 PROUD SPONSOR OF THE 2026
STEARNS COUNTY FAIR

Member **FDIC**

Nutrien Ag Solutions™

801 Beltline Rd. • Sauk Centre, MN 56378
320-352-6564

syngenta **LOVELAND**
 BREVANT. DEKALD. ASGROW. DYNASRO SEED **Echelon**

Follow us on Facebook at www.facebook.com/NutrienAgSolutionsSaukCentre

GCP GRANITE CITY PAVING

Residential & Commercial Driveways | Parking Lots | Walking/Bike Paths
 Asphalt Patching | Silage Pads

Contact Karle Meyer today for a Free Estimate
 320-266-8820 | karle@granitecitypavingllc.com www.granitecitypavingllc.com

is a Family Owned asphalt paving company serving the St. Cloud and surrounding areas.

TMG INDUSTRIAL STINGER ATTACHMENTS QUICK ATTACH

Snow Removal
 Land Clearing
 Pen Clearing
 Tilling

MAKE YOUR JOB EASIER WITH THE RIGHT SKID STEER ATTACHMENT

DMR ATTACHMENT SALES
320-292-0219 | dmrattachmentsales@gmail.com

GILMAN CO-OP CREAMERY

Propane \$12.99 FOR A 20 LB. REFILL

GILMAN, MN - SALES ON - LIVESTOCK EQUIPMENT all summer long

We make CUSTOM RATIONS!

Free soft serve ice cream cones during **June Dairy Month**

Scan me

GOOD SERVICE - FAIR PRICES - EVERY DAY

320-387-2770 | 115th St. N.E. | Gilman, MN 56333 | www.gilmancreamery.com

Mon - Fri 7:30 am - 7 pm
 Sat 7:30 am - 5 pm
 Sun 8:30 am - 1 pm



(800) 962-0655 | STEARNSELECTRIC.ORG

RICH SPRING GOLF CLUB

18 HOLES

\$45

WITH CART Coupon good for 4 people

+TAX EACH

Good Through 2026 Season

Monday thru Friday
Anytime

Saturdays & Sundays
After 1 pm

Holidays
After 1 pm



320-685-8810

17467 Fairway Cir
Cold Spring, MN 56320

POLAR TANK TRAILER

At Polar Tank Trailer, we are a premier manufacturer of tank trailers known for our premium products, simplicity of design, customization and mission-specific engineering.

Polar Tank Trailer, LLC, the largest over-the-road tank trailer manufacturer in the United States, is now accepting applications for Production employees at our Opole, MN location.

ALWAYS SEEKING SKILLED WELDERS & ASSEMBLERS

Check out our job opportunities at Entransinternational.com/careersMTO or send your resume to

Human Resources Director
Polar Tank Trailer, LLC
12810 Co. Rd. 17 (Opole)
Holdingford, MN 56340
EEOC
rnelson@entransinternational.com

MINNESOTA TRAILER OPERATIONS

polartank.com • 320-746-2255



If you are interested in growing your career and growing our business, we may have the opportunity for you!

Helping Farmers Since 1974!



SBX800



Parts In Stock

Ritchie
Fresh Water
For Life™



**Most Models
In Stock.**

**Service &
Installation
Available.
Parts On Hand.**



**40 Series
TMRS**



In Stock

Parts In Stock



5290V



In Stock

Parts In Stock

Minnesota's Largest Feeding and Manure Handling Dealer

Dairyland Supply
SAUK CENTRE
320-352-3987
1-800-338-6455
"In the Middle of Minnesota"

If you have a barn, we have a solution.
www.dairylandsupply.com

SAUK CENTRE, OFF I-94 ON THE CORNER OF HWY. 28 & 71 SOUTH

PULLING FOR FFA

SAUK CENTRE TRACTOR & TRUCK PULL

Saturday, July 25, 2026 at 5:00 p.m.

Food trucks on-site

Gates open at 3 p.m. • Stearns County Fairgrounds • GRANDSTAND ADMISSION \$12

Hosted by the Sauk Centre FFA Alumni and the Stearns County Plowmen

Only 10 pullers in each class

**JOIN US FOR AN EVENING
PACKED WITH FUN FOR THE
WHOLE FAMILY!**

Antique Tractors 4 mph

- 4,500 LBS
- 5,200 LBS
- 6,000 LBS

Open Tractors

- 7,200 Modified Tractors
- 6500 Open

Stock Tractors

- 6 mph 7,500 LBS No Turbo
- 6 mph 9,000 LBS No Turbo
- 6 mph 10,500 LBS
- 6 mph 12,000 LBS
- 6 mph 15,000 LBS
- 10 mph 17,000 LBS
- 10 mph 20,000 LBS
- 10 mph 30,000 LBS

Improved Tractors

(no speed limit)

- 9,500 Improved Stock 410 cubic in limit
- 10,500 Improved Stock 410 cubic in limit
- 11,500 Improved Stock
- 12,500 Improved Stock

Truck

- Modified Diesel
- 9,000 LBS
- Factory Stock Gas/Diesel
- 9,000 LBS
- Pro Stock Class
- 6,500 LBS
- Open Modified Diesel
- 8,500 LBS

**CALL TO
REGISTER AFTER
JULY 1ST**

For questions, contact Eugene Marthaler (320-420-0191) or Shawn Olson (320-333-1906)